

The
FIRST
PRESBYTERIAN
CHURCH
WEST CHESTER, PA

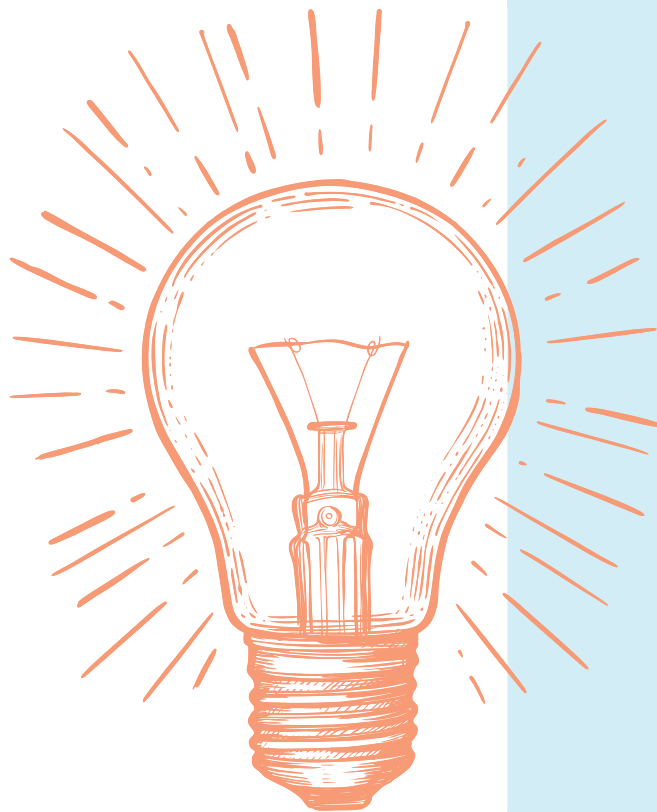
2026 Stewardship Campaign

"Now to him who by the power at work within us is able to accomplish abundantly far more than all we can ask or imagine..."

Ephesians 3:20

IMAGINE WHAT GOD CAN DO

First Pres is moving into a season of “wonder”. Together as members, staff, and elders, we are imagining what it is that God will call us to next. As our theme verse states, whatever it is that we imagine we can do, with God’s help we can do abundantly far more. Relying on God’s grace, together, through the generosity of our time, talents, and financial resources, we can worship, serve, grow, and thrive in ways that we could never imagine.



BEYOND THE ORDINARY

Our church is full of different people, generations, and life experiences. There is nothing ordinary about a group of people who amidst their diversity come together in worship, to be sent out for the same mission: To Love God and Love our neighbors. Bringing together our hearts, our minds, and our prayers, God can use us for ministry and mission in life altering ways, and together we can serve West Chester and beyond for the sake of God’s Kingdom.

OUR GOAL

Your generosity will go toward directly supporting the many ministries of our church. Our incredible staff and our church leadership are working prayerfully and imaginatively to help lead our church into a new season of growth. In order to support the imaginative leadership of our church we are beginning strategic planning that will provide us a road map for the work ahead. None of our ministries, staff, or strategic goals are possible without your generous support of First Pres through your time, talent, and financial resources. Our goal of **1.25 Million dollars** will help support our current ministries and staff, and will set the stage for us to boldly meet God's call on our lives and our church.



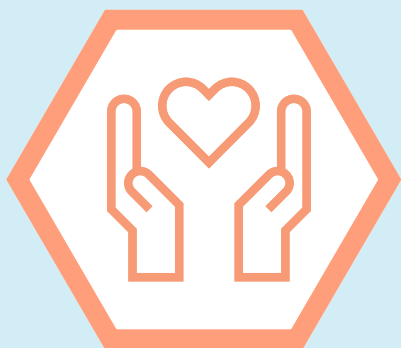


Worship and Music

Traditional Worship
Contemporary Worship
Music Ensembles
Kids Choir

Through music, scripture, prayer, and preaching, we are a worshipping community that honors God and is sent out into the world to serve God and others. Worship is our response to God's faithfulness in our lives, and as our worship attendance grows we look forward to the ways our faiths will be enriched for service to God in our world.





Mission & Care

Local Mission
International Mission
Wednesday Lunches
Matthew 25
Pastoral Care
Deacon Ministry
At Home Communion
Stephen Ministry

From affordable housing, Wednesday lunches, and First Crew to our migrant ministry, Guatemala partnership, and much more, we are the hands and feet of Christ. Through your generosity we are not only able to fund our annual Mission budget, but go above and beyond in our Lent Matthew 25 Campaign, which impacts and changes peoples lives on a weekly basis. Our pastors, Deacons, Stephen Ministers, and members care for one another through prayer, at home communion, and a listening ear to support others no matter what they're going through.





Faith Formation

Children's Ministry
Youth Ministry
Adult Education
Wednesday Night Programs

Formation and fellowship opportunities show First Pres is committed to learning and growing in our faith, and learning and growing through fellowship with one another. Our faith is not static, and together we seek to grow year over year in our knowledge of God and God's will for our lives.





Congregational Life

Fellowship
New Members
Community Events
Hospitality

We are a congregation who does life together. We believe that fellowship and the building of meaningful relationships enlivens our church and our faith. From small groups and bible studies to age and stage groups, all church picnics, and community events, we are a community of faith who gathers together.





Building & Property

Historic Preservation
122 & 126 W. Miner
Technology
Maintenance & Grounds

We don't simply have a historic building for the purpose of history, but we have almost 200 years of faithful worship and ministry that has transformed the lives of those who worship and those our community impacts. Care for our beautiful church building is both an act of stewardship and of hospitality for all those who come through our doors.





Personnel

Employees
Administration
Benefits
Staff Support

Our pastors along with our entire church staff work to ensure that our ministries serve God and our neighbors. The staff of First Pres works alongside our church leadership to ensure we are faithfully answering God's call on our church through longstanding and new ministry initiatives, relationship building, music and worship, education, and faith formation, and mission.





Ways to Give



Check



Give Online



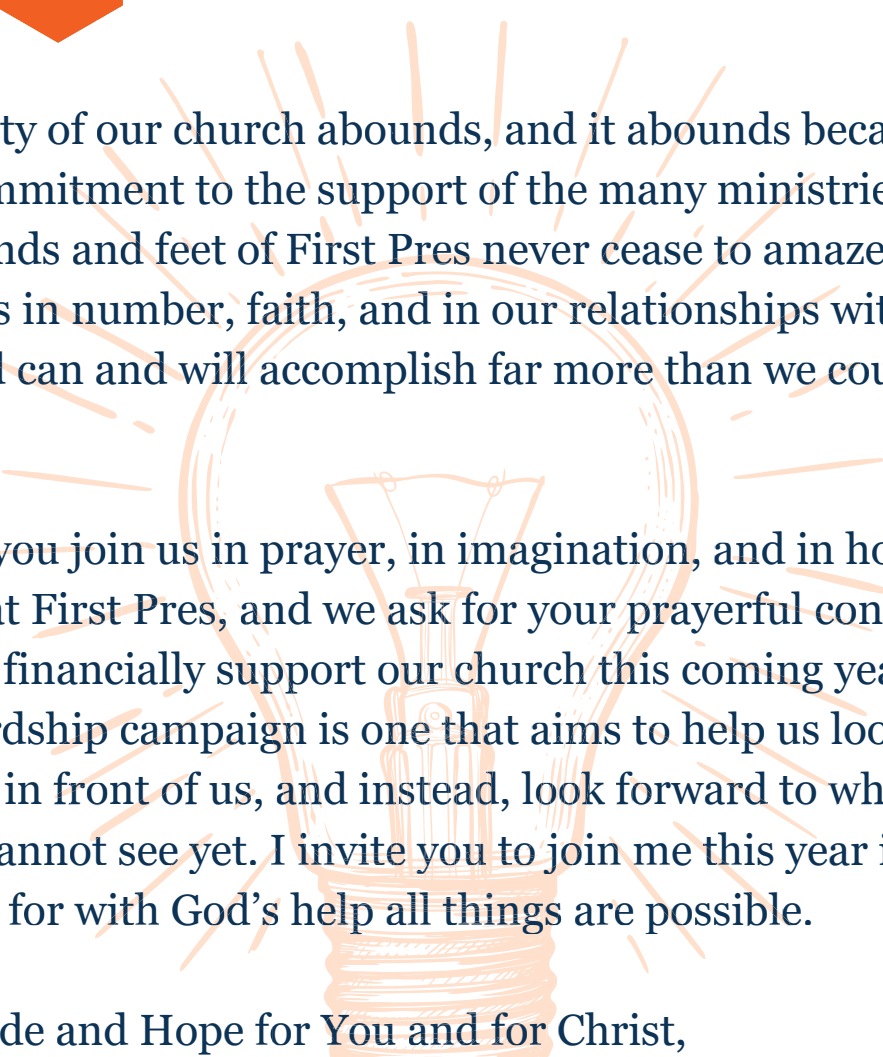

Cash



Stock Donations
Donor Advised Funds



Qualified Charitable Distributions
Required Minimum Distributions



The generosity of our church abounds, and it abounds because of your faith and commitment to the support of the many ministries of First Pres. The hands and feet of First Pres never cease to amaze. As our church grows in number, faith, and in our relationships with one another, God can and will accomplish far more than we could ever ask or imagine.

We ask that you join us in prayer, in imagination, and in hope for what God will do at First Pres, and we ask for your prayerful consideration of how you can financially support our church this coming year. This year's stewardship campaign is one that aims to help us look beyond what is right in front of us, and instead, look forward to what God can see, but we cannot see yet. I invite you to join me this year in prayerful imagination, for with God's help all things are possible.

With Gratitude and Hope for You and for Christ,



Rev. Andrew Esqueda
Senior Pastor



2026 Stewardship Campaign

First Presbyterian Church | 130 W. Miner Street | West Chester, PA 19382 |
www.firstpreswc.com | 610.696.0554