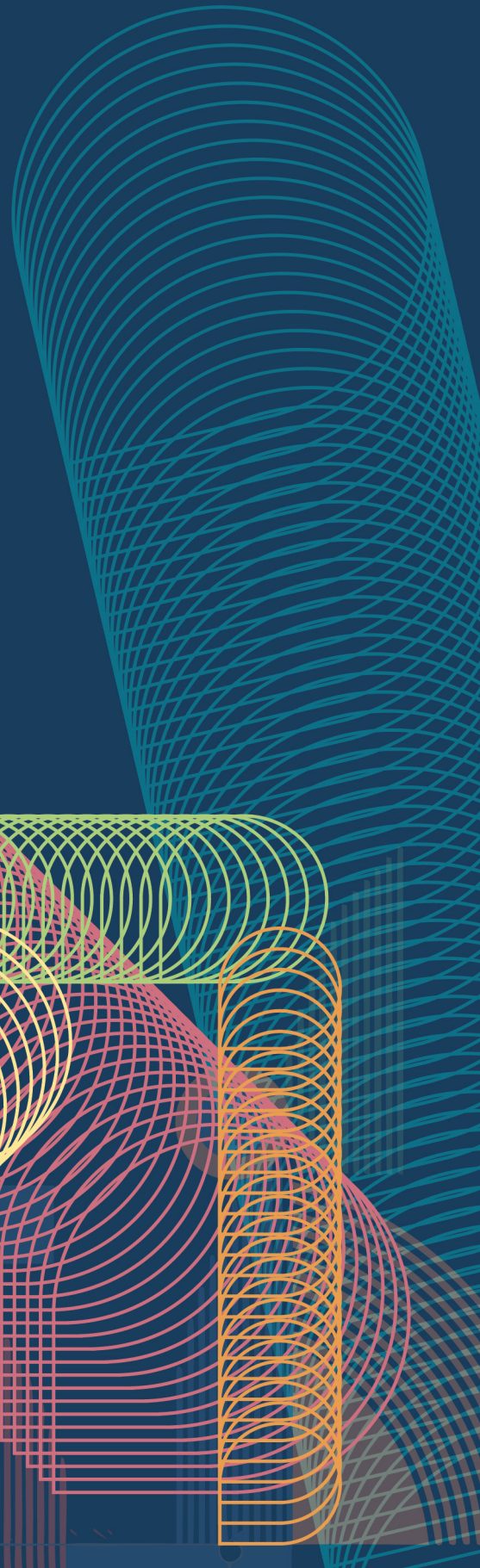




**PATHWAY**  
Community Centre

*2025 Kingdom*

# **IMPACT REPORT**



# *Table of* **CONTENTS**

- 3** Vision, Mission & Values
- 4** Pathway
- 5** Pathway Reach
- 8** Pathway Grow
- 10** Pathway Multiply
- 12** Pathway Expand
- 14** Pathway Innovate
- 17** Pathway Financials



# VISION

For all people to become followers of Jesus

# MISSION

Loving God

Loving People

Making Disciples of Jesus Together

# VALUES

Experiencing God

Creating Community

Reaching Beyond



+



# PATHWAY 2025 IMPACT REPORT

## A VISION REALISED

2025 marked an exciting step forward for Pathway Community Centre, with the opening of the Pathway Wellbeing Centre. We are seeing the fulfillment of the dream of those who founded Pathway, to serve our clients holistically. We are honoured to be able to continue to care for our community through offering food relief through our fortnightly food hampers. However, we are overjoyed to now offer free and low cost wrap around services to support our clients emotional, financial, physical and spiritual wellbeing.



**Noelle Wallis | Director of Pathway Community Centre**





# Pathway REACH

## PATHWAY DISCOVERY BIBLE STUDY

In 2025 we continued running Discovery Bible Study for our Pathway volunteers. We also ran another Alpha course for our volunteers. Several volunteers expressed a desire to learn how to study the Bible, so we ran an inductive Bible study course. It's been incredible to see our volunteers coming to faith and growing in their relationship with Jesus. Many are learning to study the Word of God and live by faith in their daily lives.

“

*I first came to Pathway as a client, on and off, for a few years. About three years ago, I started working at Pathway, as a volunteer. I didn't really have any expectations - I had stopped working and I just wanted to do something constructive with my time. I also felt that I wanted to give back to my community.*

*I had spent probably two thirds of my life battling addictions, and the rest, trying to repair the damage to both my life and my soul. I was as far away as possible, from believing in God. I was full of anger, pain and resentment. My life basically was just an existence, not really living.*

*Everyday that I work at Pathway, I get to see God's amazing hands at work - His care, His love and His compassion. It is not only seeing the food hampers, which are being given to the clients, but it is also seeing how respectfully the clients are being treated. The clients (and it doesn't matter who they might be, or where they have come from) are considered to be valuable members of our society.*

*I love being able to see such trust put into God (by the managers, supervisors and many of the volunteers), that He does care and that He will provide ... and time and time again I get to see this in action at both Pathway Food Services and the Wellbeing Centre. It really warms my heart.*

*Unexpectedly, through Pathway, I have found so much more. I have found incredibly good people at Pathway and the Clovie Church - where I feel so comfortable. Again, I get to see God working with His people, in many different areas - spanning from mission work, to caring, not only for vulnerable people in our local communities, in Australia, but also overseas, to learn about what the Pong-A-Thon is doing, by trying to help abolish slavery. I get to see hope being brought back into the world.*

*Through Pathway, I have discovered an amazing Bible study group, called "The Book Club". I regularly attend these study sessions, and through this, I have learnt so much about God and His goodness. The Book Club is a very special safe place, where we can explore the scriptures at a comfortable pace, in a relaxed atmosphere. Basically, it is a safe environment, where anyone can really ask anything, and they will not be judged for it.*

*I think that I have grown spiritually so much - I now have a sense of calmness and peace, knowing that pretty much, whatever will come, things will be alright - as it is in God's hands. All we need to do is put our trust and faith in Him and His words.*

**Jane | Pathway Volunteer**

”

## MORE THAN A SHOP

One of our greatest areas of impact is through our volunteers. Many serve with us for up to 15 hours a week as part of their Centrelink requirements. This provides a wonderful opportunity not only to work alongside them but also to speak into their lives and share how Jesus shapes and influences the way we live and care for others.

Over the past year, we have walked closely with two of our volunteers who experienced the loss of a parent. We stayed in regular contact, offering prayer, encouragement, and practical support. Both shared how deeply they felt cared for and supported during such a difficult season.

Often we don't realise the impact we have on customers until they tell us. One young woman who moved to Adelaide from another country became a regular visitor to the shop. She opened up about her life and the challenges she was facing. We listened and supported her as she navigated life as a new immigrant.

Recently she rushed in, beaming with excitement, eager to share her good news. Her professional qualification had been recognised in Australia and she had secured a job. She was also excited to share how her children and husband were settling in and making a life here. Overflowing with gratitude, she

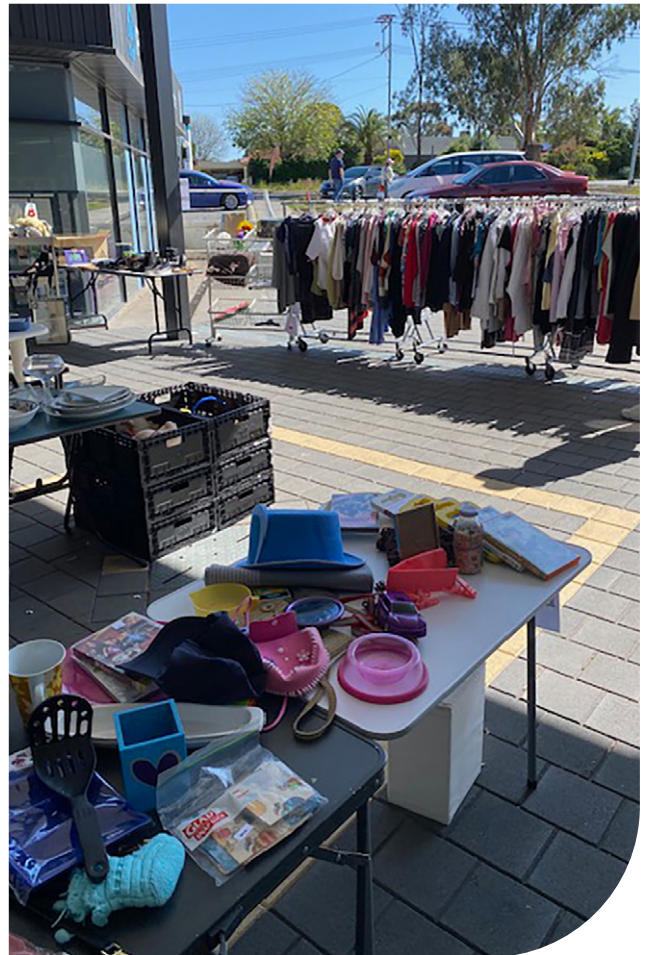
thanked us for the encouragement and support she had received along the way. Another familiar face in the shop is a young mum who often visits with her bright and chatty daughter. She regularly shares some of the challenges of parenting, and while much has changed since our own parenting days, we enjoy listening, offering encouragement, and reminding her that she is doing a wonderful job.

She often visits Quench Café - Clovie before or after stopping by the shop, which has created natural opportunities to connect her with other ministries at Clovie.

Treasured Op Shop continues to be far more than a place to shop — it is a place where relationships grow, encouragement is shared, and the love of Jesus is lived out in everyday conversations.

**Val D'Arcy | Treasured Op Shop Manager**







# Pathway GROW

## FAITH ON DISPLAY

One of the verses God gave us for 2025 was Matt 5:14-16: “You are the light of the world—like a city on a hilltop that cannot be hidden. No one lights a lamp and then puts it under a basket. Instead, a lamp is placed on a stand, where it gives light to everyone in the house. In the same way, let your good deeds shine out for all to see, so that everyone will praise your heavenly Father.”

God has opened the doors for us to expand our work and visibility into the community this year. We pray that the community will see the light of Jesus and experience His love through all of Pathway’s services.

One of our volunteers shared the powerful impact she made sharing the love of Jesus as she cared for the physical needs of a family.

“

*A couple arrived 5 months ago on a work visa after having been refugees in another country for 10 years. Work is much less than was agreed upon and the couple are unable to get more work although highly qualified. They have 2 children and are unable to meet their needs.*

*They were very grateful to Pathway for support with food but as well as this we were able to advocate for them with the Refugee Association and link them in to get support from Baptist Care Community Connections.*

*At the end of the interview I asked if I could pray for them and they were very happy for me to do so, so I prayed a prayer of blessing over them.*

*They were very grateful.*

**Pam Wiggins | Pathway Volunteer**

”



# A MOMENT OF HEALING AND PRAYER

One of the Treasured volunteers lost her first-born son six hours after his birth in 1975. She was very young and had to accept not being able to see her baby and was advised to not take him home for a funeral but to leave it to the hospital to take care of the details.

In 2024, she attended the Bereavement Journey course at Clovie and shared her story with me and said that her son had been buried in a communal grave. It would have been his 50th birthday the following year and she wanted to mark it in some way.

The following year, I asked her if she would like me to accompany her to the cemetery to which she agreed. There is a memorial there and we found the paver with his name and laid some flowers on it.

We then located the site where his body had been laid. We hugged, cried and I prayed for her, her precious baby and for God's peace and comfort as she continues to grieve her loss.

She has shared many times since how much the time we spent together and the prayer meant to her and I was able to say to her what a privilege it was to share that time with her.



**Val D'Arcy | Treasured Op Shop Manager**





# Pathway MULTIPLY

## HONOURING THE HANDS THAT SERVE

We value our team of approximately 180 volunteers a year who serve across all areas of Pathway. The work is often physically and emotionally demanding. Our volunteers give generously of their time and gifts to serve our community. We were thrilled to be able to gift our volunteers printed name badges with their Christmas gifts this year. It was a small token of our appreciation for each of our beautiful volunteers.

**180**

VOLUNTEERS  
A YEAR

“

*As I head towards Pathway each Monday morning, I thank God that I am able to work there and contribute in a very small way to the wonderful work that is done there.*

*It is a very well led and organised place whose main function is to provide food hampers for many in our community.*

*However, it is much more than that. Noelle and Margriet radiate God's love and set the tone for a place filled with joy and positivity. Each one of the very diverse team of workers, along with a more divergent group of clients, are accepted, valued and always treated with respect. Our team has so much fun as we work hard, sorting food and packing the generous hampers for our clients, sharing in each other's joys and sadnesses. The acknowledgment of God's love and provision by both Noelle and Margriet as well as the prayer time that always concludes our team meeting is expected and accepted by all our team, regardless of their personal beliefs...such a witness!*

*I also love the time I spend working on the front desk, meeting and greeting our clients. It is so special seeing people's reactions and the way most of them are happy to help others out, sharing trolleys, lifting hampers and just having conversations with each other.*

*I go home tired each Monday, but feeling what an absolute privilege it is to work at Pathway.*

**Heather Cortis | Pathway Volunteer**

”





**Treasured**  
OP SHOP

## GROWING OWNERSHIP, GROWING CONFIDENCE

This year we have seen a wonderful increase in ownership among our volunteers across many areas of Treasured. Rather than simply completing routine tasks, many are taking a broader view of the shop and stepping into greater responsibility.

On a personal level, I have been greatly encouraged by members of the team who have willingly taken on tasks that I would normally do, making my role much easier.

It has been a joy to see volunteers grow in confidence as they use their skills and often discover abilities they didn't realise they had. This has strengthened the sense of unity within the team, with volunteers encouraging and appreciating one another. It is especially encouraging to hear team members complimenting and supporting each other as they work together.

**Val D'Arcy | Treasured Op Shop Manager**



# Pathway EXPAND

## A CENTRE FOR HOPE, HEALING AND HELP

We rejoiced in 2025 to open the Pathway Wellbeing Centre. Through our Wellbeing Centre we are able to offer free and low cost services onsite to help increase community connection and support the holistic wellbeing of our clients.

### Completely free services in 2025:

- Financial counselling through Anglicare
- Support to access NDIS through Feros Care
- Community Connections Program through Baptist Care
- No Interest Loan Scheme (NILS)
- Legal Services through Uniting Communities
- Aged Care Support programs and groups through Uniting Communities
- Aged Care Support programs through Life Care
- One Sight eyeglasses clinics

### Services with a fee:

- Christian Counselling
- Migration Consultant

We also began running courses and group sessions for our clients. We ran a New Light Empowerment Program for women who have experienced domestic and family violence. We have run multiple free seminars and information sessions for My Aged Care and available supports for seniors.

One of the brave women who attend the New Light Empowerment program shared:

“

*I wasn't really sure what to expect when I signed up for the domestic violence course at Pathway, but I'm so glad I did. It's been wonderful connecting with other women who really understand what I'm going through, and I've learnt just how many ways domestic violence can affect our lives—physically, mentally, emotionally, in our relationships, financially, and even spiritually. I was especially interested to learn more about the impact of trauma on the brain and to pick up some new techniques that are already making daily life a bit easier. Having access to a leader who is incredibly knowledgeable and highly qualified has meant the content of the course has been well beyond what I thought it would be. It was also very meaningful that the leaders shared their own vulnerability and lived experience, which made the sessions feel even more genuine and relatable. Both the leader and support person have been so welcoming and genuinely lovely, which made such a difference. I'm really grateful for this experience and feel much more supported and hopeful for the future.*

**Anonymous | Participant in New Light Empowerment Program**

”

# STRONGER TOGETHER: PARTNERING WITH HARVEST COMMUNITY CARE

We celebrate the unity and alignment with Harvest Community Care Counselling. Six Christian counsellors are working out of two rooms in the Pathway Wellbeing Centre. The counsellors from Harvest have become a part of our Pathway Community.

“

*“It has been so encouraging to see my clients becoming part of the Pathway community. Many have shared how much they enjoy popping into the Op Shop before their sessions or stopping by Quench Café afterwards—taking a quiet moment over coffee before heading back to work. I absolutely love that this space is a living, breathing community where people feel welcomed, cared for, and surrounded by the tangible love and peace of Jesus”.*

**Sophie Claire | Counsellor with Harvest Community Care**

”



**Treasured**  
OP SHOP

## TREASURED: ABUNDANCE THAT BLESSES OTHERS

We often say that we can never out-give God, and this year has been a wonderful reminder of that truth. We have been blessed with an abundance of goods from a store whose items we are unable to sell but can offer in exchange for a donation. At times this can be a little challenging when someone offers only a small amount for an item with a much higher retail value. To help with this, we display the catalogue price and encourage customers to give generously,

knowing that all funds support the work of Pathway.

One of the great joys of this arrangement is the freedom it gives us to bless others. Throughout the year we have been able to give new clothing to ministries and community groups including Whitmore Square, Andrews Farm Church, the Elizabeth North Mums' and Babies' Group, a women's shelter in Adelaide, and William's Wardrobe.

We have also donated new toys to organisations hosting Christmas parties, contributed to Samaritan's Shoe boxes, and supported individuals heading on mission trips.

In addition, members of our team have spoken at several service clubs during the year, sharing about the work of Pathway and Treasured. These conversations have led to generous food drives and further donations that continue to bless our community.

**Val D'Arcy | Treasured Op Shop Manager**



# Pathway INNOVATE

## A CLEARER FUTURE: EXPANDING ALLIED HEALTH AT PATHWAY

164

CLIENTS EYES TESTED  
& GIVEN GLASSES

We rejoice in the expansion of the Wellbeing Centre into offering allied health services for our community. In 2025 we offered two Pathway Free Eyeglasses Clinics thanks to the One Sight team. Through these clinics a total of 164 of our clients had their eyes tested and received free glasses. This clinic is a beautiful example of the vision God gave to find new and innovative ways to support our community and increase the impact we have in peoples lives.

The need for this service was evident, and the impact has been immediate and deeply moving.

- Years of Waiting: Several clients shared that they had been waiting years for new glasses, simply unable to afford the expense.
- The Struggle: One person movingly shared that they had been going without glasses after theirs broke, unable to afford a replacement – a situation that can significantly impact daily life, work, and safety.

Again and again, clients express joy and gratitude as they collect their glasses. They are amazed that they could not only receive free glasses but also choose frames and receive complex lenses like multifocals.

We are truly privileged to work alongside the One Sight team, who generously donate their time and expertise to care for our community.

A client in their 70's shared:

“

*I was really happy that I was able to go to Pathway to get my eyes checked. I was never going to get my eyes checked. It's the first time I've had them done. I was happy to find that while I needed glasses for distance and for reading, my eyes had no complications.*

**Anonymous Client**

”





“

*It was a true privilege to witness Pathway in action and many of my colleagues were both amazed at the work Pathway does, and also shocked at the high need in the local community. We were able to bless 78 people at our clinic with a basic eye test and glasses, and referred many on for more comprehensive testing. I was touched to hear from a client who was nearly in tears that we would be able to provide a pair of glasses to her for free. Her glasses had broken a while back but she couldn't bring herself to tell her husband, as she knew he needed glasses more and it was not something they could afford for both of them. This clinic was something I had prayed over to go well, so I was humbled that I could use my skills to serve in this way and that we could help so many.*

**Lauren Ashworth | Onesight Optometrist**

”

## EXPANDING OUR SOCIAL SUPERMARKET

In 2025 we increased our dignified food relief for our community through increasing and expanding our social supermarket model of service. We use our under-cover courtyard area as a Social Supermarket space where we put out bread, fruits and vegetables for clients to choose for themselves. This model of service delivery, in addition to our current food service, increases clients choice of and access to fresh fruits and vegetables. These items are in addition to the food they receive in their food hamper.

# A SEASON OF IMPACT AND GRATITUDE



This year, Life FM held their inaugural market in June, and we were excited to take part by hosting a stall. Despite torrential rain and strong winds, the day was a great success. Sales were excellent, but even

more valuable were the many conversations we had about the work of Treasured and Pathway. In the months that followed, we noticed an increase in new customers visiting the shop, along with a significant rise in enquiries through our Google Business page.

We also participated in an auction this year. While it required a great deal of time and preparation, it proved worthwhile. Seeing large

amounts of stock find new homes in one event was incredibly rewarding, especially knowing that it might otherwise have taken a long time to sell through the shop.

As I write my final Impact Report as Manager of Treasured Op Shop, I realise that the greatest impact has been on me personally. Over the past 12 years, I have grown immensely in both my faith and confidence. It has been a privilege to be part of such a supportive staff team, and I cannot speak highly enough of the volunteers I have served alongside.

Some of these faithful volunteers were part of Treasured even before I began, and I have deeply valued their loyalty and commitment. It has been a joy to serve with such a wonderful team, and I will greatly miss being part of this community.

**Val D'Arcy | Treasured Op Shop Manager**



# Pathway 2025

# FINANCIALS

Treasured Revenue:

**\$243,139**

Donations:

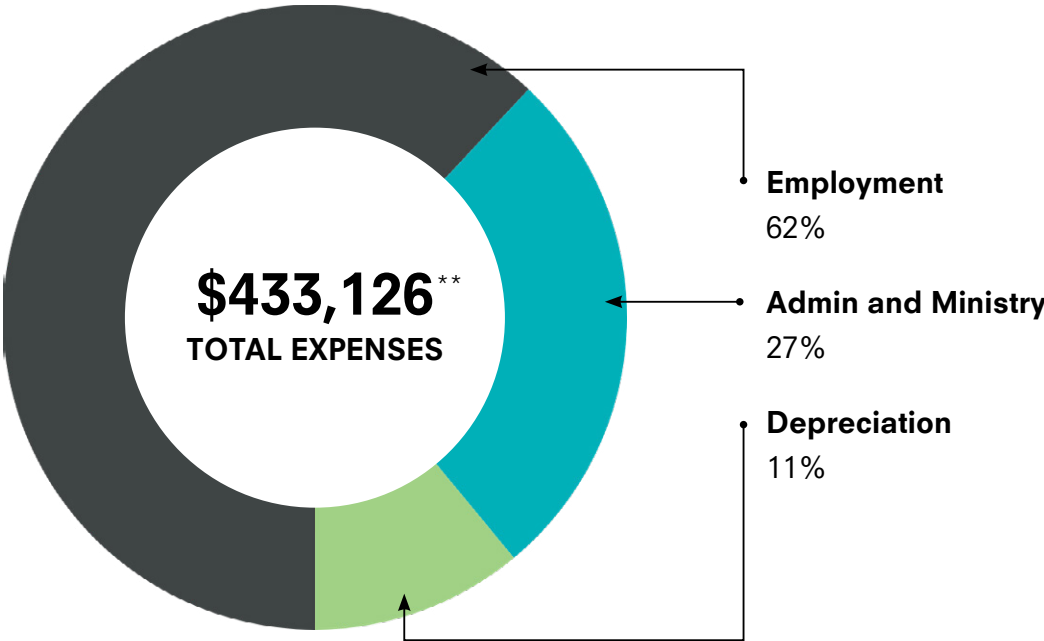
**\$138,940**

Other Income:

**\$358,014**

Total Revenue: **\$740,094**

29.4% increase from 2024



\*\*The figures on this page are to be confirmed by our external reviewer.







**PATHWAY**  
Community Centre

---

**Phone:**

(08) 8395 1881

**Email:**

[office@pathway.clovercrest.com.au](mailto:office@pathway.clovercrest.com.au)

**Web:**

[www.clovie.com.au/pathway](http://www.clovie.com.au/pathway)

**Location:**

249 Milne Road,  
Modbury North SA 5092

---