

MONTHLY NEWSLETTER

DAYS PRING

MARCH 2026

Come and Pray, Sing and Worship
Come and Listen, Reflect and Contemplate
Come and Relax, Enjoy and Celebrate

Lent · Holy Week · Easter at Christ Lutheran Church

- Ash Wednesday · February 18th · 7pm
- Palm Sunday · March 29th · 10am
- Maundy Thursday · April 2nd · 7pm
- Good Friday · April 3rd · 7pm
- Easter Sunday · April 5th
 - 9am Traditional Service
 - 11am Celebration Service

All Services Available on ZOOM

Christ Lutheran Church
69 Main Street, Hellertown
brings its Congregants AND Community...

Reiki



COMPLIMENTARY Half-Hour Sessions

with a Reiki Master

APPOINTMENTS highly recommended and greatly appreciated

Monday, March 2nd, 4:15 - 7:30pm

Contact Judy Chernikovich-Clemens for details and to schedule your appointment today!

610-657-2607 ✉ jbird1952@yahoo.com

Christ Lutheran's WEEKLY pick-up and delivery of baked goods and produce from Giant in Hellertown to New Bethany in Bethlehem.

GIANT

New Bethany

A community of hope and support



Choice
FOOD PANTRY

OPEN HOURS
Monday - Friday
10:30 a.m. to 11:30 a.m.

Please call with any questions or to schedule an appointment

New Bethany
610-691-5602 | NewBethany.org



"The employees who help our volunteers are always very polite and helpful. These two, young people insisted on helping me load up even though it was 15 degrees at the time!" - Dave Willard



Church Office
610.838.0400
Monday - Friday 10:00am - 4:00pm
Closed for Lunch Noon - 1:00pm



Connections for the Journey...

Metaphors

I have often heard that if you want to understand the Bible, you better be a poet. It takes imagination and curiosity to understand many of the verses in the Bible. But once unleashed, the Bible can be a life transforming, life long, reading.

We are currently studying the Gospel of John in my Thursday Day Bible study class. We do more than just read. We seek to understand. In the Gospel of John, you must understand metaphors and step out of your literalness. John attacks literalism in his telling about Jesus. Metaphors express something deeper that words alone cannot express. John is deep and rich, full of meaning and quite revolutionary with what John does to the story of Jesus.

In many places, John diverges from the Synoptic Gospels. Synoptic means, syn=same, optic=view, "same view" Gospels of Matthew, Mark, and Luke. You can study these 3, side by side, they share a common story line. Not John. John is unlike the synoptics. There is no ability to place John side by side with Matthew, Mark, and Luke.

Let me show you two of many differences between John and the synoptics. I encourage you to check out these verses yourself. When you stop reading the Bible and studying the Bible, you too will realize that whoever wrote the Gospels, and I say "whoever" because they were all anonymous when first written and decades later various names of the disciples were attached to them. Whoever wrote the Gospels put their own spin on Jesus' life, in retelling the Jesus story. Yes, you too are encouraged to put a spin on Jesus' life that makes sense to you. If your spin does not center on loving others and making this world a better place, your spin needs some work.

The Last Supper... In the Last supper of the synoptics, Jesus breaks bread and shares wine with the disciples. It takes place in the upper room the night before he is executed. These Passover meals including the "Words of Institution, with the bread and wine, 'This is my body broken for you. This is the blood of the new covenant poured out for many. Do this in remembrance of me.'"

Matthew 26:20-29 (NRSV) 9 verses

Mark 14:17-25 (NRSV) 8 verses

Luke 22:14-38 (NRSV) 24 verses

John Chapters 13-17 (NRSV) 5 CHAPTERS! And in those 5 chapters, is no breaking of bread or sharing the cup of wine.

John has 5 chapters dedicated to this last meal, which is not a Passover meal, as in the synoptics. Which brings me to a second interesting aspect of John. Jesus is dead before Passover.

Jesus dies on a different day of the week from the synoptics. WOW! John 19:14, 31, 42 makes it very clear that it was the day before Passover, the day of Preparation, when he wrote that Jesus was crucified.

Is John writing history? Are any of the Gospels historical? They are best understood as a confession of faith of what the authors believed, not a biography of Jesus.

Why would John have Jesus killed on a different day of the week? It's a METAPHOR... Let me know if you can find the answer and discover for yourself why John has Jesus die on the Day of Preparation for the Passover, and not the day after Passover in the synoptics.

I'd love to hear from you.

Know God loves you!
Pastor Phil

Your Church Council last met on February 17th.

At our meeting this month We took some time to celebrate being accepted as a Reconciling in Christ church, and discussed how best to communicate it to our members and the wider community.

It was our annual reorganization meeting with our new council members at which time commit to continue to work ethically, and faithfully together, sharing our views and conducting productive discourse. We strive to make decisions that are best for our faith community, regardless of our individual views.

Your Church Council will meet next on March 17th.

	<i>Year to Date thru January 2026</i>		
	Church	Learning Center	TOTAL
Receipts	\$39,228	\$68,010	\$107,238
Expenses	<u>-\$50,661</u>	<u>-\$69,803</u>	<u>-\$120,464</u>
TOTAL	<u>-\$11,433</u>	<u>-\$ 1,793</u>	<u>-\$ 13,226</u>
Budgeted Giving	\$34,341		Actual Giving \$26,109

MARCH VOLUNTEERS	1	8	15	22	29
COFFEE HOUR	Elaine Snyder	Bold Women	Brunch		Men's Group
SOUND TECH	Kurt Rank	Kurt Rank	Kurt Rank	Kurt Rank	Kurt Rank
A/V TECH	Kevin Gough	Ken Doremus	Mark Stana	Kevin Gough	Ken Doremus
COMMUNION	Claire Kostbar Sheryl Caliguire			Quiet Communion Enid Rank	
GREET/USHER	Alice & Mike Karpa	Elaine Snyder Carol Dishmon	Andrew & David Kubisek	Claire Kostbar Tori Kadingo	Mackey/Barnes Bergstresser/Del Re
READING(S)	Anne Baum	Patty Ivenz	Corky Blake	Cheryl Glasker	Mary Ann Horvath
PRAYERS	Enid Rank	Sheryl Caliguire	Carolyn Raudenbush	Angela Drake	Glenn Butterfield



NORTHEASTERN PENNSYLVANIA SYNOD MONTHLY NEWSLETTER

Feeding Body and Soul at Hope's Table

Written by: April Mulvey, Synod Authorized Outreach Ministry (SAOM) leader at Hope's Table

Hope's Table: 601 N Front St Reading, PA 19601

Every Tuesday the doors open around 4:30 in the afternoon. During those chilly winter months, our guests are greeted by Sara, who pours each a cup of hot chocolate. Anita is back in the kitchen, where the aromas of the night's dinner are wafting through the hallway. Scott is preparing his music and Judy is either mingling with our guests or helping Anita. As I am preparing the table for worship, I am talking with everyone and listening to the chatter in the room. Before dinner is served, I go around the room asking everyone for prayer requests and the guests fill me in on the happenings of the week. Welcome to Hope's Table.

My journey to serving at Hope's Table is slightly unconventional. I did not grow up in the church. In fact, the first time I attended a church service (outside weddings and funerals) I was sixteen years old because I grew up in a dysfunctional family system. My first exposure was when my grandmother took me to her church. I grew up in a home that did not show the love and compassion of the Gospel of Christ, and I carried that into my adult years. I ended up in a 12-Step recovery program, but I was still missing "something."



That "something" was the God piece in my life and it was not until I got involved in a church and with people who loved me unconditionally, and told me God loved me even more unconditionally, did my life drastically change to the path that put me where I am today being the SAOM leader at Hope's Table. My background in life allows me to relate to the guests that walk into the doors of Hope's Table in ways that are truly personal and empathetic, and I can connect with them and their needs in times of pastoral care because I know some of the struggles they endure. I relate to the brokenness, the loneliness, the desperation, because I was once there too, but the power and love of God have done miraculous things! It put me back together.

That is part of my hope for Hope's Table. We are not *just* a food ministry. We not only feed the body, we nourish the soul as well. We come together, even if it for only one hour a week, and break bread together, and although we are not defined as a "congregation" by the ELCA, we are a community of the *ekklesia*. Church, since the pandemic, may need to be redefined and ministries like Hope's Table help pave the way for that re-definement.



If someone is curious about how to get involved with Hope's Table, my best advice would be to come and check us out! Show up! Come and see us in action on Tuesday. Come and sit with our guests and get to know them. Come and volunteer to serve dinner and then we can get you scheduled for service work. Come and see just how blessed we are to be in their presence.

Hope's Table has taught me so many lessons about myself and about the world over this past year. I have learned more about the structure of the synod and church this year and how all those smaller cogs in the wheel have to be put into position and work in unison, or the grander machine does not work. It is not just about one single church or ministry; there is a grander picture at play—like a drop in a bucket of water that sends ripples over the surface. There is much, much more to leadership than the worship at Hope's Table. The decisions we make do not just affect us. They affect the synod, and the ELCA, as a whole.

Having support from the synod has left an immense positive effect on me throughout this whole journey. In those moments when I may doubt myself, or not believe in myself, the synod staff have all uplifted me and given me support. The synod has also supported the mission of Hope's Table as vital to the community, proving once again, that God's people are seen and their needs are heard; that they are not ignored except on a Sunday morning. This continues to demonstrate that my service is properly placed.



I am excited to serve as Hope's Table's SAOM leader and the possibilities and doors that will open for us. I am also excited to be attending the Fresh Expressions National Gathering 2026 at the end of February with other colleagues from NEPA Synod in Ocala, Florida. It is proving to be an inspiring year. I have big dreams for Hope's Table! And why should I? I serve an even bigger God who has done amazing things.

Three Gatherings Across the Synod - Each event runs 8:30 a.m.–12:00 p.m. with three speakers focused on its theme.

Learning Ministry Days



Register at godslove.org/LMD26

-  **Mar 7, 26** - *"How Do We Lift Every Voice: Exploring Worship, Music and Family Ministries"* (Atonement Lutheran, Wyomissing)
-  **Apr 25, 26** - *"How Can We Walk Together: Mental Health and Spiritual Wholeness"* (Lutheran Church of the Holy Spirit, Emmaus)
-  **Sept 19, 26** - *"Who Do We Trust: Truth, Scams and AI"* (Zion United Lutheran, Brodheadsville)



**Lenten Series
Soup & Service**
Soup @ 6 – Service @ 7

***Your Pastor's
Favorite Bible Story***

Wednesday February 25th	<i>Esther</i>	<i>Pastor Patti Hoyt speaks at:</i> Christ Lutheran Church 69 Main St, Hellertown, PA 18055
Wednesday March 4th	<i>Ruth</i>	<i>Pastor Becky Thomas speaks at:</i> Friedens Evangelical Lutheran Church 2451 Saucon Valley Rd, Center Valley, PA 18034
Wednesday March 11th	<i>Shadrach, Meshach, and Abednego</i>	<i>Pastor Phil Spohn speaks at:</i> First United Church of Christ 501 Northampton St, Hellertown, PA 18055
Wednesday March 18th	<i>Jonah</i>	<i>Josh Gulotta speaks at:</i> New Jerusalem Evangelical Lutheran Church 3233 Apples Church Rd, Bethlehem, PA 18055
Wednesday March 25th	<i>The Woman at the Well</i>	<i>Pastor Lisa Borrell speaks at:</i> Lower Saucon United Church of Christ 1375 3rd Ave, Hellertown, PA 18055

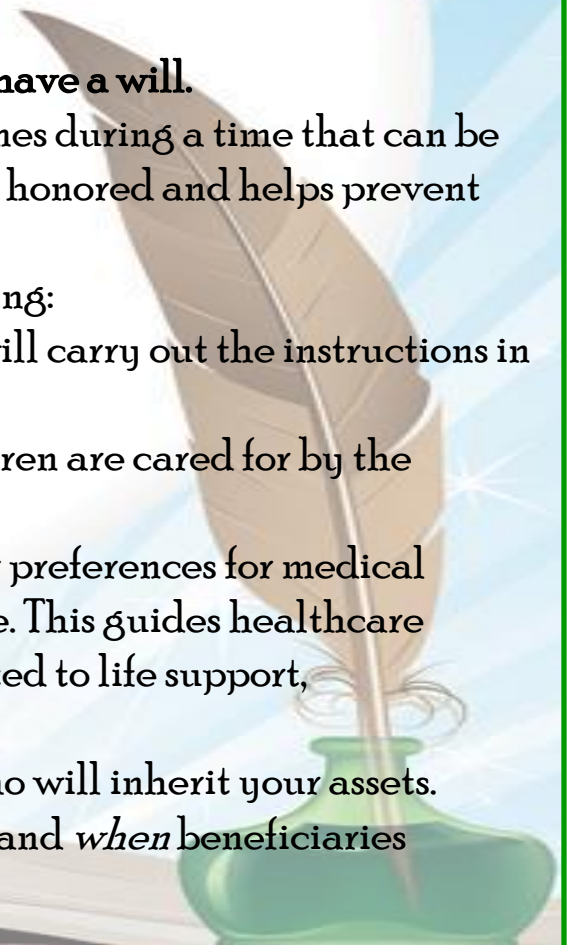
Who Needs a Will?

The short answer is, **anyone over the age of 18 should have a will.**

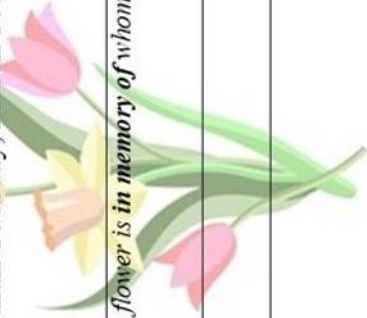
A will provides clarity and guidance for your loved ones during a time that can be emotionally overwhelming. It ensures your wishes are honored and helps prevent confusion, stress, or family conflict.

A well-crafted will should include at least the following:

- **Executor Appointment** – The trusted person who will carry out the instructions in your will.
- **Guardians for Minor Children** – Ensures your children are cared for by the individuals you choose.
- **Health Directives** – Documentation outlining your preferences for medical treatment if you become unable to communicate. This guides healthcare providers and family members on decisions related to life support, resuscitation, and other critical care choices.
- **Beneficiaries** – The individuals or organizations who will inherit your assets.
- **Distribution Instructions** – Clear guidance on *how* and *when* beneficiaries should receive their inheritance.



Anyone wishing to place flowers in the Sanctuary for Easter is asked to fill out this form and place it in the Offering Plate, or submit it to the Church Office no later than Tuesday, March 10th.



In Memory of:

(Please print clearly and accurately describe which flower is in memory of whom)

In Honor of:

(Please print clearly and accurately describe which flower is in honor of whom)

Given by:

Relationship to Memorialized/Honoree:

Flower	Quantity	Price	Total
Daffodils		\$10.00	
Easter Lily		\$10.00	
Tulips		\$10.00	
TOTALS			\$

All Orders and Payments Must Be Received by the Church Office No Later Than Tuesday, March 10th

Please feel free to take your flowers with you after the service you choose to attend.

Payment Enclosed: (Check/Cash) \$ _____
 Please make checks made payable to: Christ Lutheran Church
 (Memo: Easter Flowers)

Wrestling with the Difficult: Feeding the True Hungers of Lent

with **Maureen DeBellis**, Spiritual Director & Meditation Teacher
 Schooled in the contemplative arts and heart-based
 meditation for healing, connection, and well-being.

Tuesday Evenings, February 24, March 3, 10, 17, 24, 31.

7:00-8:15pmET

Where: Online via Zoom

Register by Email: spiritdirect@clch.org to register and receive Zoom link

Christ Lutheran Church Hellertown, PA is sponsoring this series. While there is no set fee, donations to CLCH are always appreciated.

Wrestling with the Difficult: Feeding the True Hungers of Lent will be a time of exploring the often hard-to-digest themes of: Return, Forgiveness, Lament, Justice, and God's Love through the contemplative arts.

Each session will include but not be limited to an opening prayer; a thematic teaching and contemplative practice, reflection and group sharing for deeper processing. Our time will end with a closing prayer or meditation. Join in for 1 session or all 6.

EGG MY YARD

Order your candy or toy filled eggs (peanut free available) to be delivered and scattered in your yard for Easter morning! Candy is prepackaged.

You can surprise **your children/grandchildren, neighbor, or friends** for some Easter Morning fun!

Delivery, Saturday, April 4th between 6 p.m. to 8 p.m.
Deadline to order is March 27th
For more info see Saucon Valley Lions Club website or
Hartfam403@gmail.com

25 Eggs
\$25

50 Eggs
\$45

75 Eggs
\$65



I signed up for this interesting newsletter from a company named *Supercool*. It is full of updates on companies they have featured in the past. In the latest issue I learned about a place in Georgia called *Solarcycle* that processes end of life solar panels recovering valuable materials like silver, copper, glass and aluminum. They are recovering up to 96% of the materials which is so much better than these panels ending up in landfills.

I liked one update about a facility in Malaysia that converts feedstock waste into aviation fuel at a commercial scale. That's very innovative and impressive!

Another short article tells about a new 10,000 square-foot fire station in Somerville MA that is fully electric meaning fossil fuel free; no boiler or furnace to repair/replace.

There is a brief article on a public library in Oregon built with mass timber and powered by rooftop solar panels. It's all electric and the roof panels power it 100%. This library has flexible spaces for meetings and coworking.

You might want to check it out if you are interested in seeing what is being designed in this fast growing area of eco conscious building.

There are lots of these brief paragraphs on projects all over the world. Definitely easy to read and so informative.

Check it out at Supercool.com.

Angela Drake, ECO Team Editor-at-Large

CHRIST LUTHERAN \$SCHOLAR\$HIP\$

Are you a graduating senior? Have you been involved in the life and ministry of this church? You are invited to apply for a scholarship through Christ Lutheran. All forms of continuing education programs are eligible for this award. So whether you are entering a 2 or 4 year college, a trade school, or a training program, you are encouraged to apply. To request your application materials or to ask any questions, please contact our Youth & Family Minister, Josh Gulotta at yfm@clcht.org.

Application Deadline: Sunday, March 22nd

Maureen DeBellis Spiritual Director

email: spiritdirect@clcht.org

Due to donations from church members, Spiritual Direction sessions will be offered to members of Christ Lutheran at a very discounted rate of \$10. Sessions can be held in-person or online (limit 6 sessions/2025).



- ★ Wondering where God is in your life?
- ★ Struggling to see God's presence in daily activities?
- ★ Feeling a holy disconnect?
- ★ Desiring a deepening life of prayer?

**When these kinds of questions and interests begin to stir,
Spiritual Direction may be what your are looking for.**

Maureen DeBellis is a spiritual director, inter-spiritual companion, a teacher of Heart Rhythm Meditation (HRM) and a retreat guide for the Spiritual Exercises of St. Ignatius. She has a BA in Marriage and Family Studies from DeSales University and a Graduate Level Certificate in Spiritual Direction from Moravian Theological Seminary in Bethlehem, PA.

INCLEMENT WEATHER

Log on or tune in to
WFMZ (Channel 69)
for closing information.

Please always use your best judgment when deciding whether or not to join us.

WFMZ-TV

BIBLE STUDY

THURSDAYS

12:15-1:15 PM

**IN THE CHURCH LIBRARY
OR VIA ZOOM**

DUNGEONS & DRAGONS

THE WORLD'S GREATEST ROLEPLAYING GAME!

2ND & 4TH SUNDAYS

FOLLOWING WORSHIP

SAMUEL.RAUP@GMAIL.COM

Food Bank • Collection

Specially Requested Items in March:

Paper Products

RED WAGON

Drop-Off

in the Volunteer Room



GIGGLES

Girls In God Growing Loving Eating Sharing

Women's Group

Wednesdays with Enid
from 10:00am to Noon
in the South Lounge

MEN'S GROUP

TUESDAYS AT NOON

IN THE CHURCH LIBRARY

OR VIA ZOOM

Quilters

Wednesdays 8:30am

Thursdays 5:30pm

Come Join Us!

All Skill Levels Welcome

Yoga

~Mind~Body~Spirit

Every Saturday morning at 9:30

Are you attending events at CLC?

Hello, my name is Debbi Pereira and I am the Communication Specialist at Christ Lutheran Church, Hellertown.

I design ads for the church and post them currently on Social Media, Saucon Source, create the Sunday Brunch Placemat, and maintain our website.

If you are taking pictures at any event and would like to share, please send them to dpereira@clcht.org with any details, including the event name and dates, and I will post them for you!

Thank You

Sign-Up
in the Narthex

Spring
CLEAN UP

Saturday, April 18th 8am to Noon

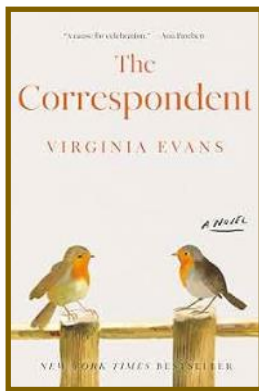
Rain Date: May 2nd

Rake, Leaf Blower, Wheelbarrow, anything you might use for outside, lawn, or garden sprucing... Bring It!

Mike Karpa 610-838-4843 mike.karpa@gmail.com

CHRIST LUTHERAN BOOKCLUB

BookClub Meets **March 30th**
"The Correspondent"
by Virginia Evans



7:00pm in the Church Library or Zoom

COMPLIMENTARY COPIES
available while supplies last



**Adult
Christian
Education**

**Every Sunday
with Pastor Phil
9:00-9:45am**

**In the
Church Library
or via ZOOM**

Thirsty Thursday & THEOLOGY

Spiritual But Not Religious
Why belong to a Faith Community?

April 16th @ 7pm
Third Thursday of the Month

Braveheart Highland Pub Lowlands Bar

March Birthdays

Don Ratushny 1st

Eric Eustice 3rd

Kyle Nagy 6th

Brooke Wilten 6th

Mary Ann Kolumber 8th

Christopher Meier 8th

Dawn Posh 8th

Bethanne Riegel 8th

David Shankweiler 8th

Colleen Mundt 9th

Bonnie Gibson 11th

Ryan Shankweiler 13th

Helene Smith 13th

Laurie Stewart 13th

Tim Brown 13th

Mary Piccuiro 14th

Mason Eisenbraun 15th

Kevin Gough 15th

Julia Brown 17th

Fran Corl 17th

Farrah Smith 17th

Saige Smith 17th

Ashley Viegas 17th

Jason Viegas 17th

Alice Karpa 18th

Lisa Kulp 18th

John Varady 18th

Helen Borovies 20th

Lauren Sagrati 20th

Doraine Salmon 21st

Allison Sterner 21st

James Koller 23rd

David Kubisek 23rd

Nancy Frederick 24th

Connie Rice 25th

Frank Doklan 26th

Micky Davila 27th

Dave Long 27th

Brandon Rank 27th

Jason Kluska 28th

Trinity Phetsavanh 29th

Rosemary Ackerman 30th

Roderick Bieler 30th

Glenn Deppert 30th

Deb Wysocki 31st

MARCH ANNIVERSARIES

Greg & Judy Chernikovich-Clemens 3/1/2002

Lee & Louise Wagner 3/2/1975

Jim & Bonnie Banks-Beers 3/3/1990

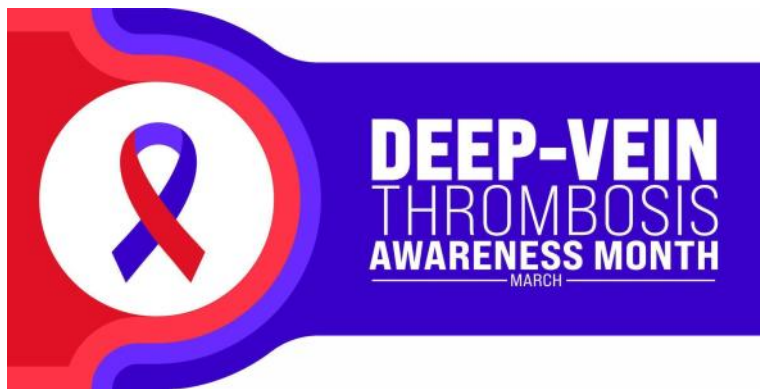
Chuck & Sharon Coe 3/9/1984

Lou & Gina Savant 3/19/1988

Sam & Amanda Raup 3/25/2012

Glenn & Kristen Clouser 3/27/1999

Bill & Marcia Fogel 3/31/1989



Visit our Information Room off the Narthex for Educational Materials

Enid Rank

Faith Community Nurse

If you have any questions or would like any additional information on anything listed on this page, please don't hesitate to contact me.



nurse@clcht.org
610-349-2970

Meal Ministry Monday March 23rd (weather permitting)

Lite fare delivery to the homebound

Monthly Communion Service Saucon Valley Manor

1050 Main Street Hellertown, PA 18055

Thursday March 19th

2:00pm Parishioners welcome to join Pastor Phil, Josh, Bonnie, and Enid for some worshipping, singing and mingling!

GIGGLES Women's Group

Girls In God Growing Loving Eating Sharing

Finding Our Fulfillment in Christ

A Lent Devotional Study for Women
by Rebekah Hargraves



Wednesdays with Enid
10:00am in the South Lounge

Easter Baskets

for our Homebound and Seniors

Looking for individuals, families or Ministry Teams who would like to create and donate an Easter basket for a Senior. Please contact Enid Rank: 610-349-2970 or nurse@clcht.org for more information.

Care Giving Team • Faith Community Nurse

Community Blood Drive

at Christ Lutheran Church MILLER-KEYSTONE BLOOD CENTER



Tuesday March 10th

1:00-7:00pm Church Parking Lot

Schedule your appointment
at www.GIVEaPINT.org

Faith Community Fellowship Friday

Dirty Dancing in Concert

Join us for "Dirty Dancing in Concert", the classic film's first live film-to-concert experience. Enjoy the digitally remastered hit movie like never before on a full-size cinema screen, with a live band and singers performing the iconic 1980s soundtrack. Directly following the film, the band and singers will throw an encore party that will surely take you back to the time of your life as you sing and dance along to your favorite Dirty Dancing songs. Immerse yourself in the timeless romance and experience one of the most memorable movies of the past 35 years!

Friday, March 6th

7:30pm

Zoellner Arts Center
Lehigh University

\$46 Tickets Available in Church Office
Cash in exact amount.
Checks to "Christ Lutheran" Memo: Dirty Dancing



MARCH CALENDAR

SUNDAY

MONDAY

TUESDAY

WEDNESDAY THURSDAY

FRIDAY

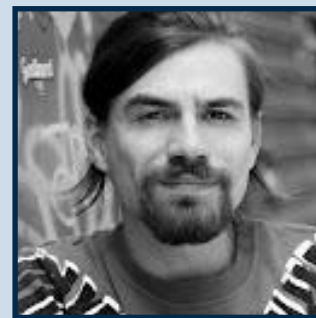
SATURDAY

<p>1 9am Adult Education 10am Sunday School 10am Worship w/Communion 11:15am Conf Class 2 11:30am Leadership Retreat 3pm Narc Anon</p>	<p>2 4:15-7:30pm Reiki</p>	<p>3 Noon Men's Group 7pm "Feeding the True Hungers of Lent" <i>Zoom Only</i></p>	<p>4 8:30am Quilters 10am GIGGLES 6pm Soup & Service <i>Friedens</i></p>	<p>5 10:30am Chair Yoga 12:15pm Bible Study 5:30pm Quilters</p>	<p>6 7:30pm "Dirty Dancing in Concert" <i>Zoellner Arts Center</i></p>	<p>7 9:30am Yoga</p>
<p>8 BOLD WOMEN CROCUS SUNDAY 9am Adult Education 10am Sunday School 10am Worship 11am D&D 11:15am Conf Class 1 3pm Narc Anon</p>	<p>9</p>	<p>10 Noon Men's Group 1-7pm Blood Drive 7pm "Feeding the True Hungers of Lent" <i>Zoom Only</i></p>	<p>11 8:30am Quilters 10am GIGGLES 6pm Soup & Service <i>First UCC</i></p>	<p>12 10:30am Chair Yoga 12:15pm Bible Study 5:30pm Quilters</p>	<p>13</p>	<p>14 9:30am Yoga</p>
<p>15 9am Adult Education 10am Sunday School 10am Worship 11am Brunch 3pm Narc Anon</p>	<p>16</p>	<p>17 Noon Men's Group 7pm Church Council 7pm "Feeding the True Hungers of Lent" <i>Zoom Only</i></p>	<p>18 8:30am Quilters 10am GIGGLES 6pm Soup & Service <i>New Jerusalem</i></p>	<p>19 12:15pm Bible Study 2pm Communion Service <i>SV Manor</i> 5:30pm Quilters</p>	<p>20</p>	<p>21 9:30am Yoga</p>
<p>22 9am Adult Education 10am Sunday School 10am Worship 11am Quiet Comm 11am D&D 11:15am Conf Class 2 3pm Narc Anon</p>	<p>23 11am Meal Ministry</p>	<p>24 10:30am Chair Yoga Noon Men's Group 7pm "Feeding the True Hungers of Lent" <i>Zoom Only</i></p>	<p>25 8:30am Quilters 10am GIGGLES 10am-1pm Lunch Prep & Serve <i>New Bethany</i> 6pm Soup & Service <i>Lower Saucon UCC</i></p>	<p>26 10:30am Chair Yoga 12:15pm Bible Study 5:30pm Quilters</p>	<p>27</p>	<p>28 9:30am Yoga</p>
<p>29 PALM SUNDAY 9am Adult Education 10am Sunday School 10am Worship 11:15am Conf Class 1 3pm Narc Anon</p>	<p>30 7pm BookClub</p>	<p>31 10:30am Chair Yoga Noon Men's Group 7pm "Feeding the True Hungers of Lent" <i>Zoom Only</i></p>				

Youth & Family Minister

Email: yfm@clcht.org

Josh Gulotta



Office Hours: Monday thru Friday, 9am to 2pm

Youth Volunteer Scholarship 2026

Last year it was Maddie and Ruth. This year it could be YOU!

The yearly scholarship committee is accepting applications from high school seniors in our community that plan to continue their education in college, conservatory, trade school, or elsewhere!

We see *you*! We see you playing in our praise band, working in A/V, helping out in Sunday School, and in general being a beloved member of our community. We want to celebrate the investment our young people have made in our community by making an investment in them! So don't be afraid — the application is short and sweet. All we ask is that it comes from the heart!

The deadline to apply is March 22nd.

Recipients will be recognized and awarded during worship on April 12th.

Does this apply to me?

1. Are you a high school senior?
2. Have you helped in Sunday School? Or volunteered/worked at the Learning Center? Served as an acolyte, server, or reader in worship? Graduated from the confirmation program? Sing or play an instrument in our praise band or choir?

If you can answer both of these questions with a “yes”, then we want to hear from you! Reach out to Josh or the church office for an application!

TEAM LEADERS

CARE GIVING:

Enid Rank
enid1@ptd.net

FINANCE:

OPEN
churchoffice@clcht.org

STEWARDSHIP:

OPEN
churchoffice@clcht.org

CONNECTIONS w/Each Other:

Claire Kostbar
ckostbar54@gmail.com

MUTUAL MINISTRY:

OPEN
churchoffice@clcht.org

WORSHIP & MUSIC:

Kurt Rank
kerank@ptd.net

CONNECTIONS w/Our Community:

Teresa Mackey
barnkey@ptd.net

OUTREACH:

Kim Blake
kblake0412@gmail.com

FAITH FORMATION:

Bre Barket
brianne.barket@gmail.com

PROPERTY:

Mike Karpa
mike.karpa@gmail.com

CHURCH COUNCIL

PRESIDENT:

Brenda Tarulli
11btarulli@gmail.com

Judy Chernikovich-Clemens
jbird1952@yahoo.com

Sam Raup
samuel.raup@gmail.com

VICE PRESIDENT:

Ed Alosi
ejalosi@gmail.com

Elise Cheung
elise.m.cheung@gmail.com

Regina Sands-Corl
techscokomuf@ptd.net

SECRETARY:

Kelly Meyer
km77ru@gmail.com

Ken Doremus
kdorem@gmail.com

YOUTH REPRESENTATIVE:
Andrew Kubisek
dkubisek@gmail.com

TREASURER:

John Varady
johnvarady@rcn.com

Mandy Mayer
mayer512531@gmail.com

Judy Meier
jemeier3@yahoo.com

STAFF

PASTOR:

Phil Spohn
psspohn@clcht.org

FINANCIAL ADMINISTRATOR:

Chip Rust
crust@clcht.org

ASST MINISTER OF MUSIC:

Bonnie Banks-Beers
bbanksbeers@clcht.org

SPIRITUAL DIRECTOR:

Maureen DeBellis
spiritdirect@clcht.org

YOUTH & FAMILY MINISTER:

Josh Gulotta
yfm@clcht.org

FAITH COMMUNITY NURSE:

Enid Rank
nurse@clcht.org

COMMUNICATIONS SPEC:

Debbi Pereira
dpereira@clcht.org

DIRECTOR LEARNING CENTER:

Nancy Frederick
nfrederick@clcht.org

OFFICE ADMINISTRATOR:

Barry Stauffer
churchoffice@clcht.org

MINISTER OF MUSIC:

Stephen Wysocki
swysocki@clcht.org

SEXTON:

Pete Kapustiak
sexton@clcht.org

ASST DIRECTOR LEARNING CENTER:

Jaelyn Ruch
jruch@clcht.org