

# GROUP-SPECIFIC COMMUNICATIONS - Small Group Leaders

- Share changes with group members weekly.
- Offer rides or help with special parking needs.
- Encourage prayer for safety and unity.

## KEY TALKING POINTS:

### Tone to Use When Sharing:

- **Be positive and reassuring** — this is an exciting season of growth!
- **Use simple, clear language** — avoid technical or complicated terms.
- **Remind people that signage, maps, and volunteers will be available to help.**
- **Encourage patience and flexibility as we build together.**

This is a huge week for site prep and starting our construction. You will begin seeing some significant changes to our building and the campus. We are so thrilled to see this day arrive and all the work that is being done so we will have the space we need to show more people God's love and represent Jesus in our community and around the world.

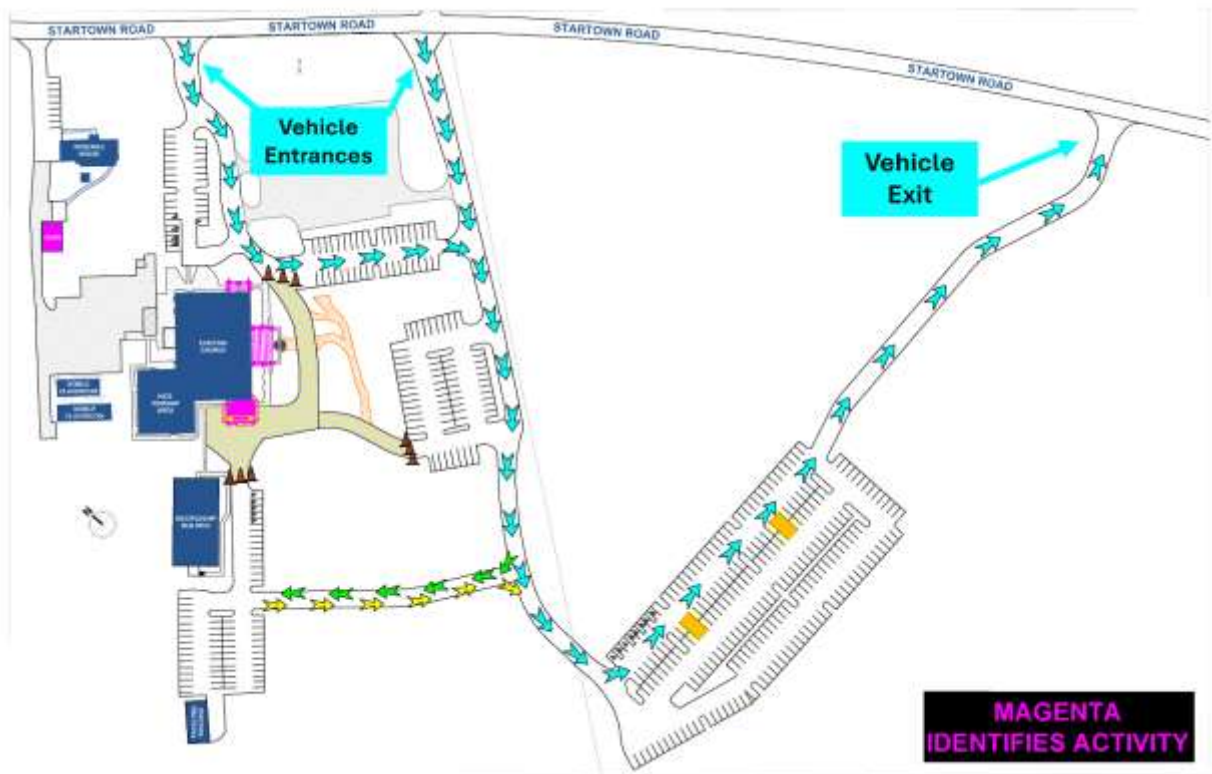
- 1) Portico Demolition - Everything is set to start on Monday, July 7
- 2) The Minnows' room is moving one door over to make room for the construction of a new entrance and foyer. We will need that entrance once construction of the new sanctuary begins.
- 3) **THE BIG NEWS!** – We are closing the road that runs past the fountain at the main entrance. This will keep everyone safe during construction and make room for the crews doing the work.



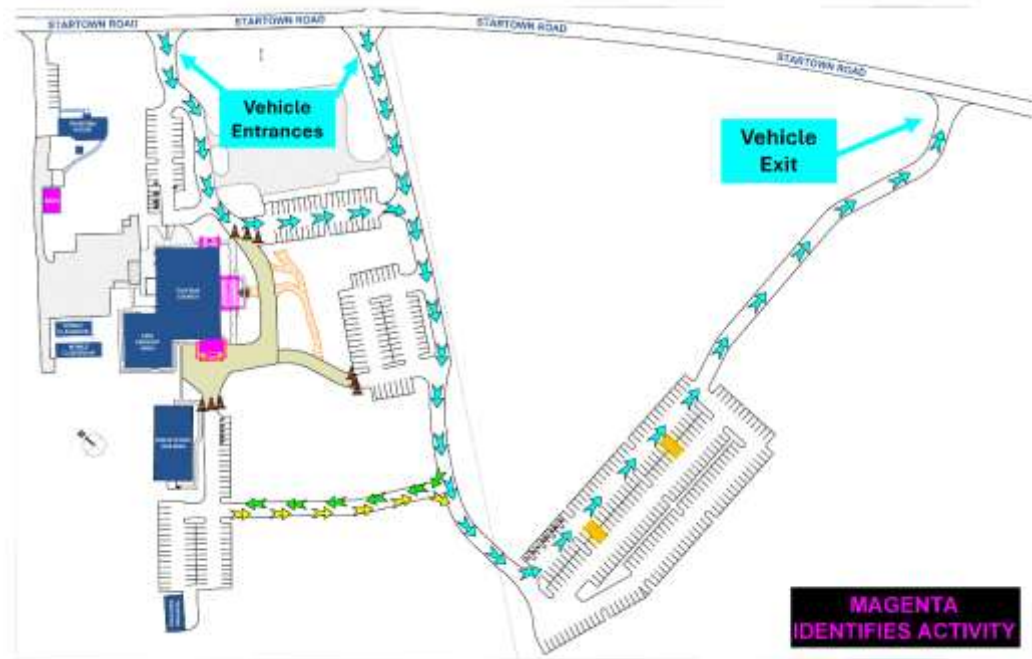
- 4) **THE GREAT NEWS –**  
a) We are not losing any parking

space. Lot D will stay open for those who usually park there.

- b) You will need to take the scenic route, through Lot A, the visitors' lot, around Lot C and along the Loop Road.
- c) When you are ready to go home, you will need to use the Loop Road, turn right, toward Lot E (near Trivium), and exit onto Startown Road using the driveway on the far side of Lot E
- d) We will have our fantastic parking team there to help guide you and keep everyone safe



- 5) The Discipleship building and its parking lot will be open during the week. You will just need to get there by coming into our parking lot from Startown Road and taking the Loop Road into and out of Lot D.



6) **STAY CONNECTED!**

There are a lot of parking changes coming, and for the next couple of months, the weather may force us to make some quick changes. We will be updating the construction page and the hotline, but we will also be sending text messages for everyone who is connected to our platform.

- To start getting text messages from Discovery, all you have to do is text START to 225.412.6775
- There is also a QR code that will be on the website and in social media messages
- Just keep checking and we will make sure you have the right information, right when you need it.

## GENERAL REMINDERS:

**To be used in conjunction with the talking points above:** The talking points are mostly construction details about what is happening and when. These changes can lead to frustrations and concern. It is important to have a few points to share that let people know we are expanding so we can do more kingdom-building work. This is a temporary season, and we will make it through together.

### **Let's Grow Together!**

As we move into this exciting season of building our new space, here are a few reminders to help things go smoothly for everyone:

#### **1. Let's serve one another in the parking lot**

As we continue to grow and build, we all need to represent Jesus in the parking lot. We have people who truly need handicapped and close spots. If you can walk from a spot that is further out or wait for the shuttles, please do so. While we build a bigger space that will allow us to serve more people in our community and beyond, please help us serve those right here in our congregation who need it most.

#### **2. Grace Will Get Us Through**

We're all in this together! Our parking team and volunteers are working hard to keep everyone safe and make sure you have the information you need. Please be patient and extend grace as they serve during a busy time. A kind word or smile can go a long way!

#### **3. Come Early, Help Others**

The 8:00 AM service still has plenty of space! Coming early or choosing that service helps ease parking pressure and makes room for families and guests later in the morning.

#### **4. Join a S.T.A.R. Team**

Help us represent Jesus. We need volunteers for greeting, parking, ushering and more. Serving is a great way to bless others and be part of what God is building!

#### **5. Stay Informed – Know Where to Go**

We'll keep you updated across all platforms:

Discovery App

Website

Social Media

Texts and Emails

Construction Hotline - 704.800.4907  
Signs  
Digital Kiosk w/Video Monitor

**6. Make sure you're connected so you always know where to park and enter.**

**7. Got Ideas? We're Listening!**

If you have a suggestion that could make this process better for everyone, we'd love to hear from you. Please feel free to drop a note at the welcome desk or send us an email at [build@discoverychurchhickory.com](mailto:build@discoverychurchhickory.com)