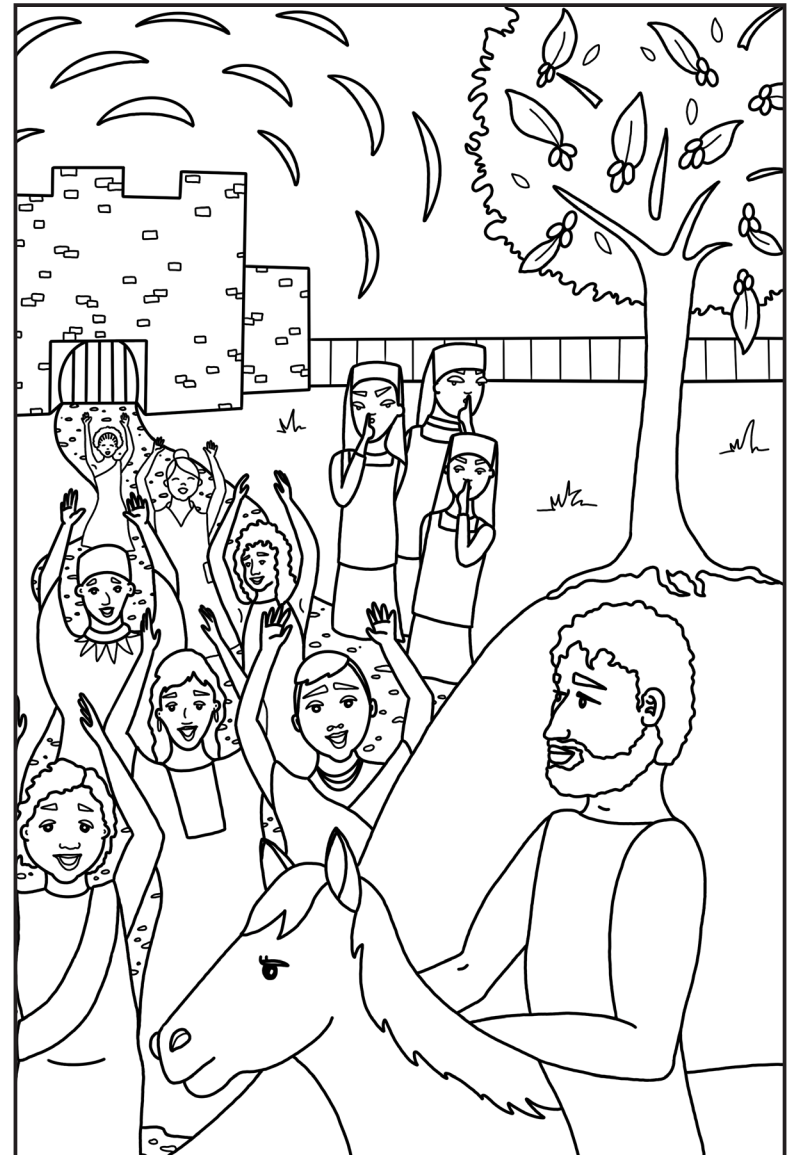


Draw Draw a picture of you talking or listening.



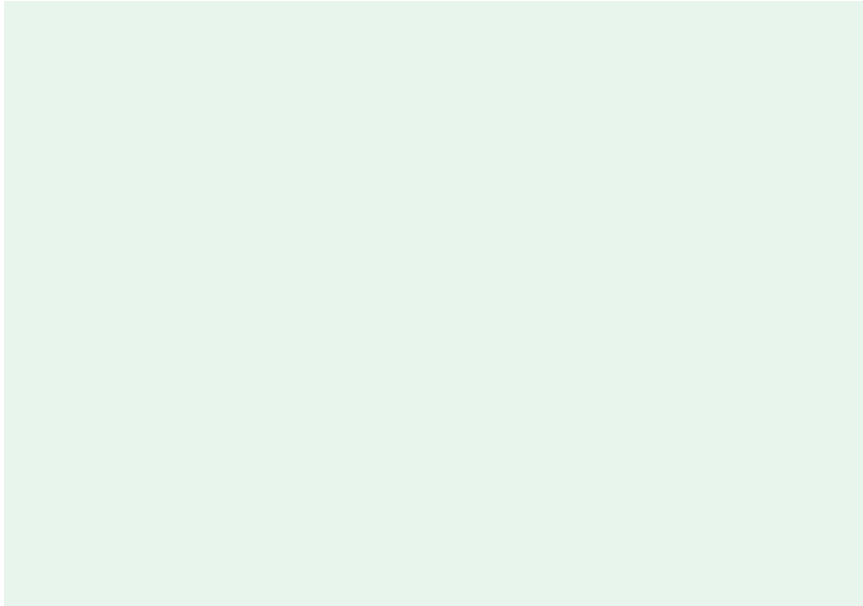
LUKE 19:29-40
Jesus enters Jerusalem
MAIN IDEA: Speaking up is
as important as listening.



Color in the story of the Triumphal Entry. | Illustration by Rev. Anna Strickland

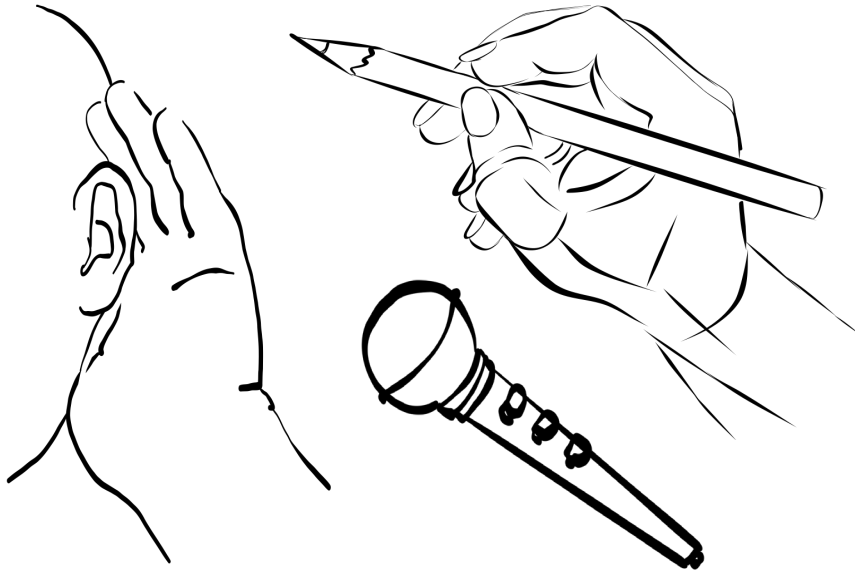
Imagine

Imagine a time when you're supposed to be quiet but you need to say something important. Write or draw about what would happen.



Color

Color the things that help us speak up and listen.



Find

Find the words from scripture when you hear them spoken in worship. Words can be vertical, horizontal, and diagonal, and they can overlap each other.

F W R K E X P K O J N L R I X
K V N D N U O F E V J G I N Y
S E L P I C S I D J O T D E O
I P M D I H L B H D K N D D M
Z S E V I L O Y R T S E E U J
A F U L U H S I R I T S N T O
B M N B C G Q U C R N B C I Y
E E T K K M N Z S O B G L T F
L T I T N E L I S E L F O L U
Q G E S Q S K P Y X J T A U L
W T X Y S W X O D A Y O K M L
A K U G L O R Y J A S U S S Y
Y N C O N G R H W Z E N T E R
A Y M X H M N N E V A E H Y R
S D L S F S Z O S E N O T S H

**BRING
CLOAKS
COLT
DISCIPLES
ENTER**

**FOUND
GLORY
GOD
HEAVEN
JESUS**

**JOYFULLY
MULTITUDE
OLIVES
RIDDEN
SAYING**

**SENT
SHOUT
SILENT
STONES
UNTIE**

This word search was generated using [dictionaries.com](https://www.dictionaries.com)

Pray

Dear God, thank you for giving each of us a voice. Help us to know when to use our voice to speak up and when to be quiet so we can hear others. Help us to listen especially for people whose voices are not usually heard and to speak up when we have something important to say. In Jesus' name we pray, amen.