

Look & See

What do you see in the art?
How does the art make you feel?



Lost and Found | Lisle Gwynn Garrity
Digital painting and collage

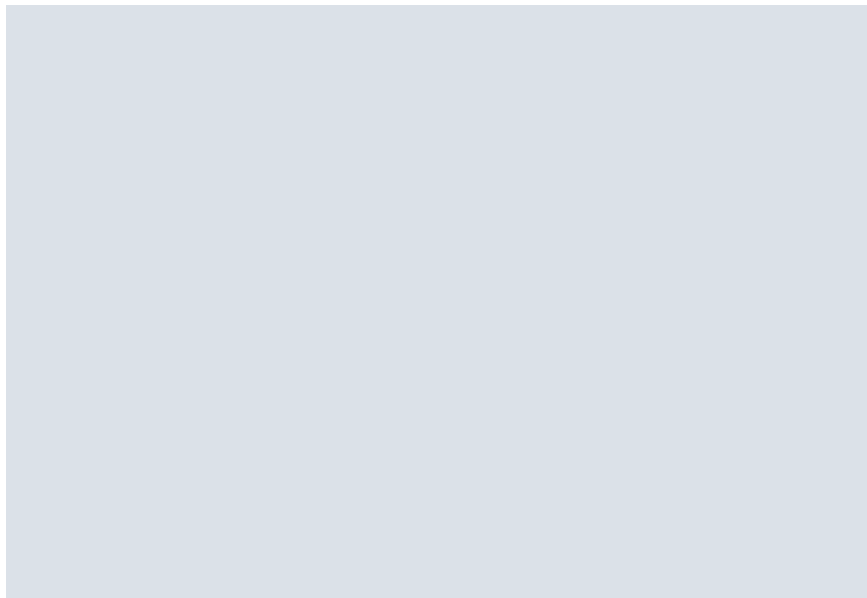


LUKE 15:1-7
Parable of the Lost Sheep
MAIN IDEA: We all belong
in God's family.

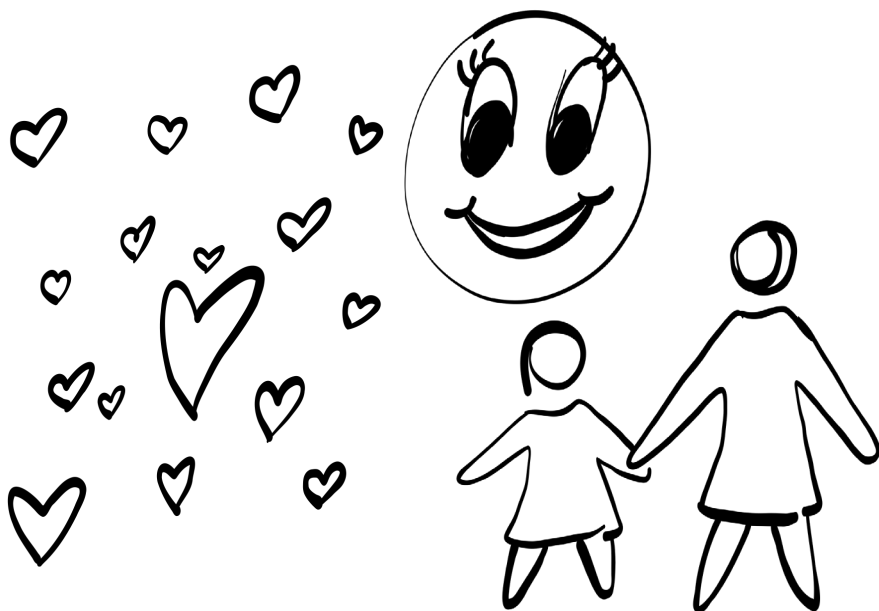


Color in the story of the Lost Sheep. | Illustration by Rev. Anna Strickland

Draw *Draw a picture of you belonging in your church.*



Color *Color the things that help us belong.*



Find *Find the words from scripture when you hear them spoken in worship. Words can be vertical, horizontal, and diagonal, and they can overlap each other.*

C R E J O I C E T Z P D F M Y
 L O S I N G F Y N D H B M I X
 O O N E X G N I Y A S G Z F G
 L A B Y W E L C O M E S O G H
 O B O T D N E A R I K M H S I
 S S L N Z J I R J I T O N E N
 T R U I S I N N E R S R P B I
 O O L S P F H M V D E E H I N
 F T P H B G Q Z H H F H A R E
 G C N E V A E H T T W Q R C T
 N E J E Z K S E N S Q C I S Y
 M L J P J I G E Z U T V S P L
 B L P X H O N A E J V A E Q U
 P O E W T I M Y V F K X E P O
 G C S G N I L B M U R G S R T

COLLECTORS
 EATS
 FOUND
 GRUMBLING
 JUST

LOSING
 LOST
 NEAR
 NINE
 NINETY

ONE
 PHARISEES
 REJOICE
 SAYING
 SCRIBES

SHEEP
 SINNERS
 TOGETHER
 WELCOMES
 WELCOMED

This word search was generated using [dictionary.com](https://www.dictionary.com)

Pray

Dear God, thank you for being our shepherd. We love to be part of your family. When we feel alone, remind us that you are with us always. When we see others who are left out, help us to include them, just like Jesus did. It's in his name we pray, amen.