

*Welcome*

H O M E



DISCOVERY **CHURCH**

**SAFE**

**SECURE**

**SPACIOUS**

**SANITIZED**

**SPECTACULAR**

# Table of Contents

## Southwest

Arrival	1
1 <sup>st</sup> Impressions Team	2
Usher Team	4
Early Childhood	6
Elementary	8
Facilities	10

## Northwest

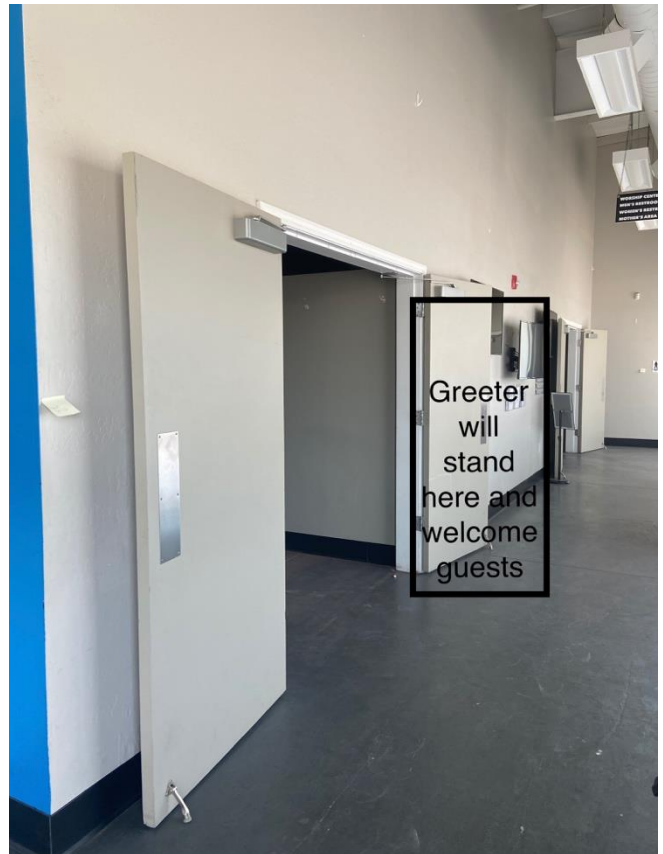
Arrival	11
1 <sup>st</sup> Impressions Team	12
Usher Team	13
Kid's Ministry	15
Facilities	17

## Dream Center

Arrival	18
1 <sup>st</sup> Impressions Team	19
Usher Team	21
Early Childhood	23
Elementary	25
Facilities	27

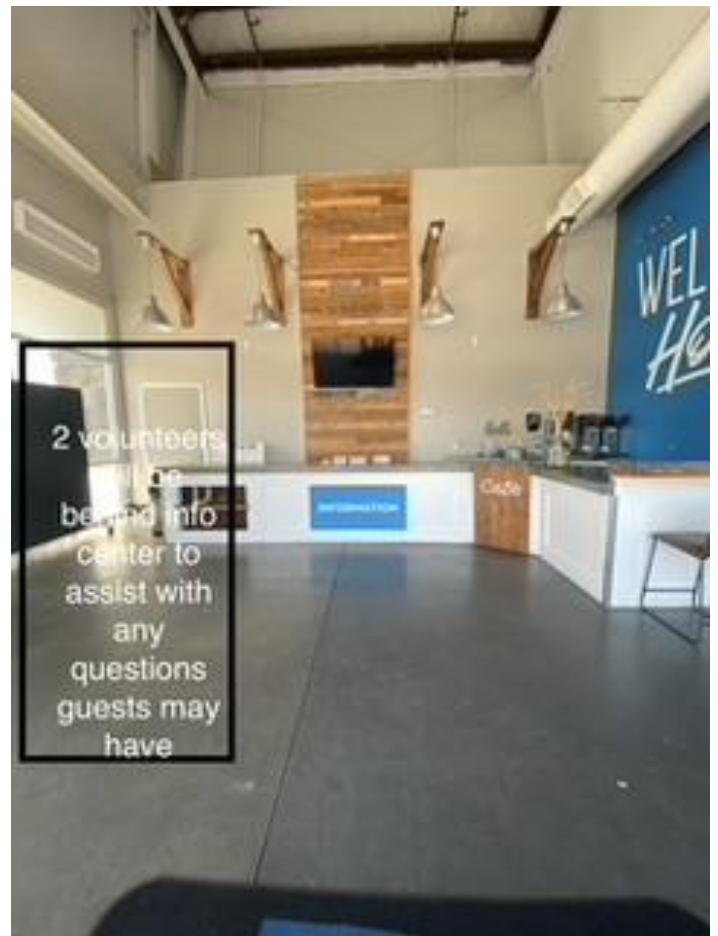
# SOUTHWEST ARRIVAL

- To control service capacity, every guest will be asked to RSVP for the service they want to attend. Each service will have limited seating
- Our services will be entirely “contact free”. We will strive to create a safe environment where guests can come in and leave without touching a single person or object
- While guests are arriving, there will be CDC guidelines encouraging guests to follow safety precautions while on the Discovery Campus
- The First Impression Team will clean and disinfect frequently all high traffic areas before and after each service. (Door handles, counters, restrooms, kids spaces, etc.)
- The facility will be deep cleaned and disinfected throughout the week to ensure facilities are kept clean and safe
- The seating arrangements in the Worship Center have been modified to keep guests approximately 6 feet apart with 2 chairs between family units. The Ushers will help direct guests where to sit in the Worship Center
- We will have disposable face masks in a container for all First Impression Team members to wear while on the Discovery Campus

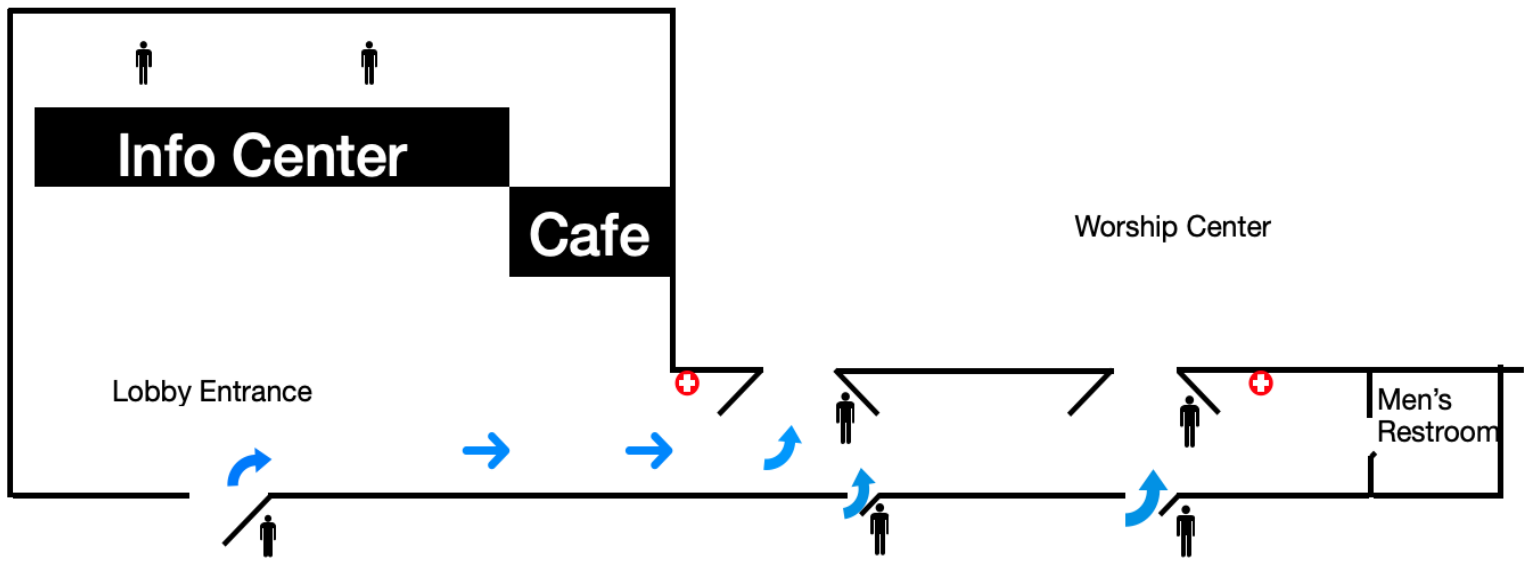





# 1ST IMPRESSION TEAM

- All team members will be passionate and life giving when welcoming guests with a wave and verbal greeting
- There will be no touching, hugging, or handshakes between team members and guests
- Team members will have a face mask worn at all times
- Every door will be either held opened by a team member or propped open to help guests enter and exit the building in a secure and spacious manner
- Lobby, restroom, and worship center door handles will be disinfected between each service
- Connection cards will be strongly encouraged to be filled out online
- There will be no coffee, water, or donuts provided for guests or team members
- Team member check in will be on personal cell phone using the “Church Center” app
- The Information Center will have two team members stationed to answer any questions guests may have
- All team members will be encouraged to sanitize their hands throughout the service
- There will be no golf cart operations to transport any guests
- Outdoor signage will remain the same



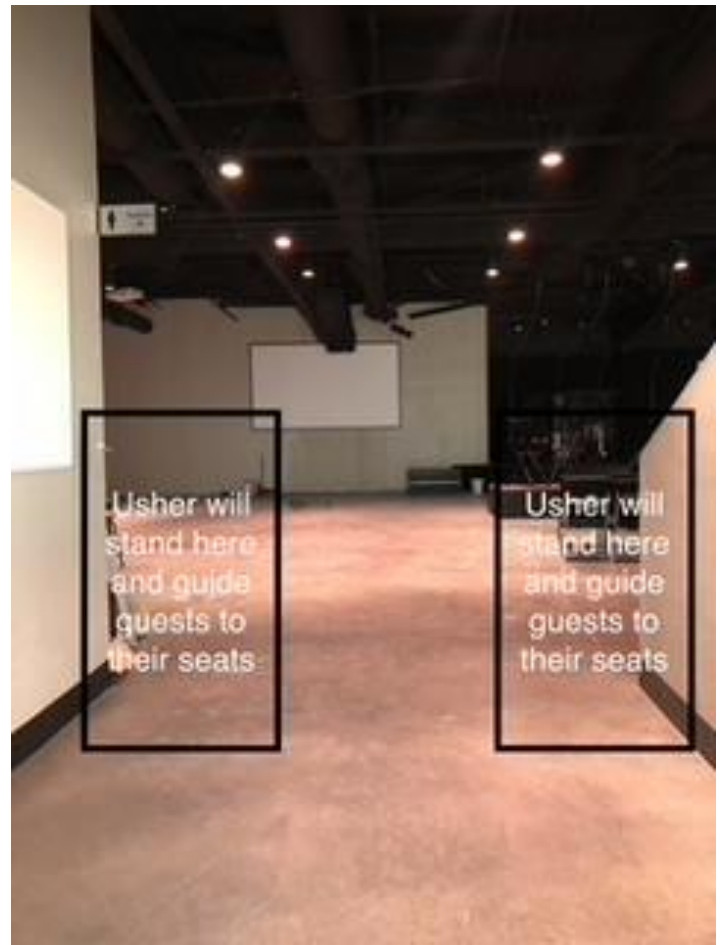
# TEAM POSITIONS - LOBBY



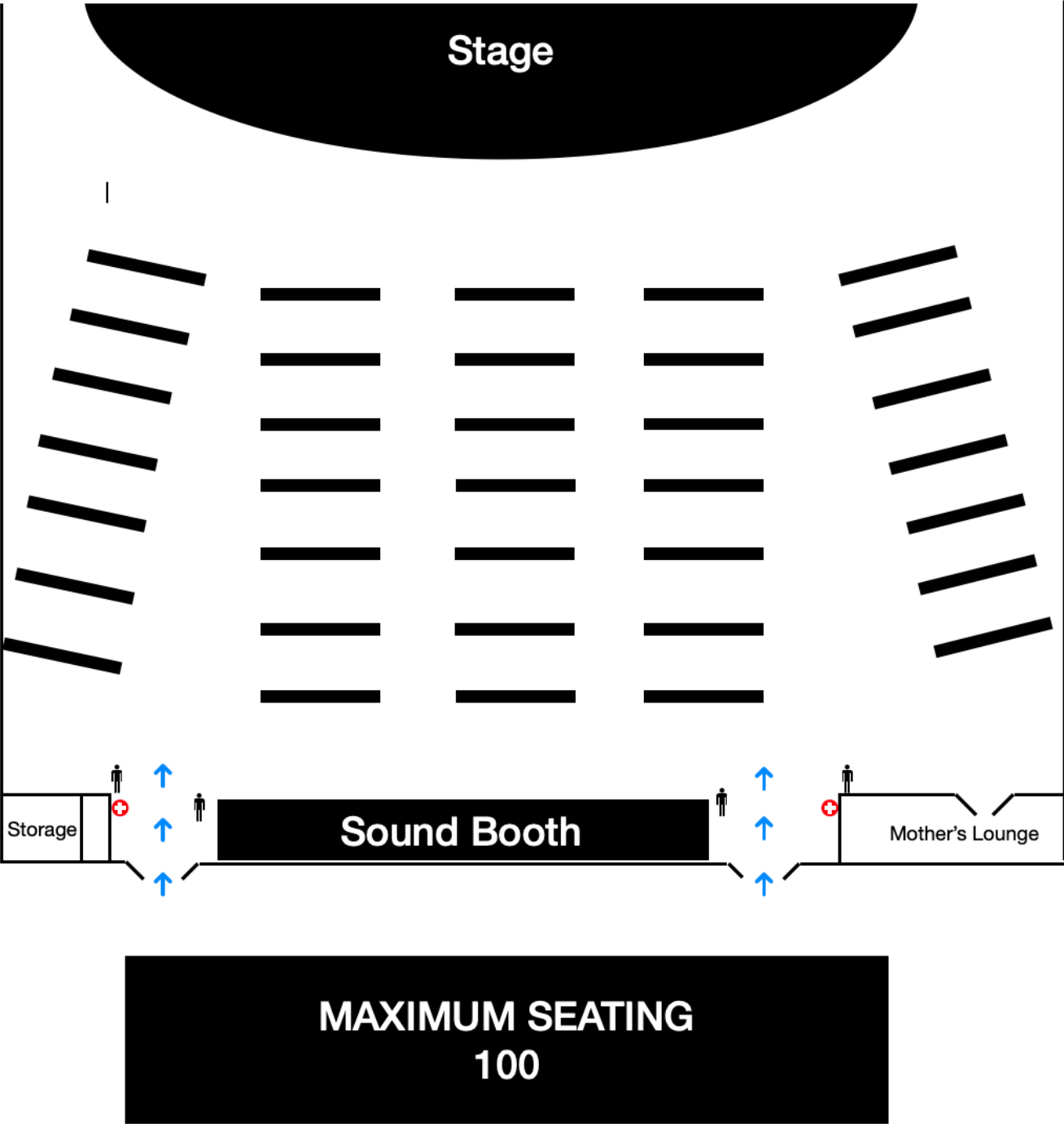
Key	
	Team Member
	Flow of Traffic
	Hand Sanitizer

# USHER TEAM

- Worship center doors will be propped open until the countdown begins. There will be two ushers on each side of the Worship Center doors ready to assist in seating arrangements for all guests
- There will be no hugs, handshakes, or high fives given at any moment. Ushers will ask guests to sit with their family and make sure there is a two seat gap between different families.
- All ushers will be wearing masks and utilizing light wands to guide guests to their seats
- Each usher will be strategically placed to avoid congregating in the back of the Worship Center
- If there is a guest upset about the precautions we are taking, we will kindly let them know that it is not about us, and we've been entrusted to keep our guests safe. We are prepared to communicate with team members who might now be able to serve right now.
- The Ushers will not be passing around offering buckets. Ushers will stand in the back to receive any offering and there will be giving stations near the Worship Center doors, which will be sanitized after each service
- The offering baskets will be cleaned and disinfected after every service



# TEAM POSITIONS – WORSHIP CENTER



Safe • Secure • Spacious • Sanitized • Spectacular

# DISCOVERY KIDS

## EARLY CHILDHOOD

### Check In:

- One team member will be stationed at each check-in tablet to assist with checking in families.
- Parent/Guardian will take the child/children's name tag and place it on the front or back of the child/children's shirt.
- The check-in station will be pulled out away from the wall to create a space for parents to exit the check in lobby through the parent lounge door to enter the worship center or to exit the church.

### Pick Up:

- There will be assigned lines for pick up and drop off. We will have signage on stanchions in the hallways and arrows on the ground to direct families where to go.
- Team members will be directing families to the exit.
- Two families will be allowed to enter at a time for both drop off and pick up.
- Parents who are picking up will enter 2 at a time to pick up child/children then will exit through the mother's room.

### During Service:

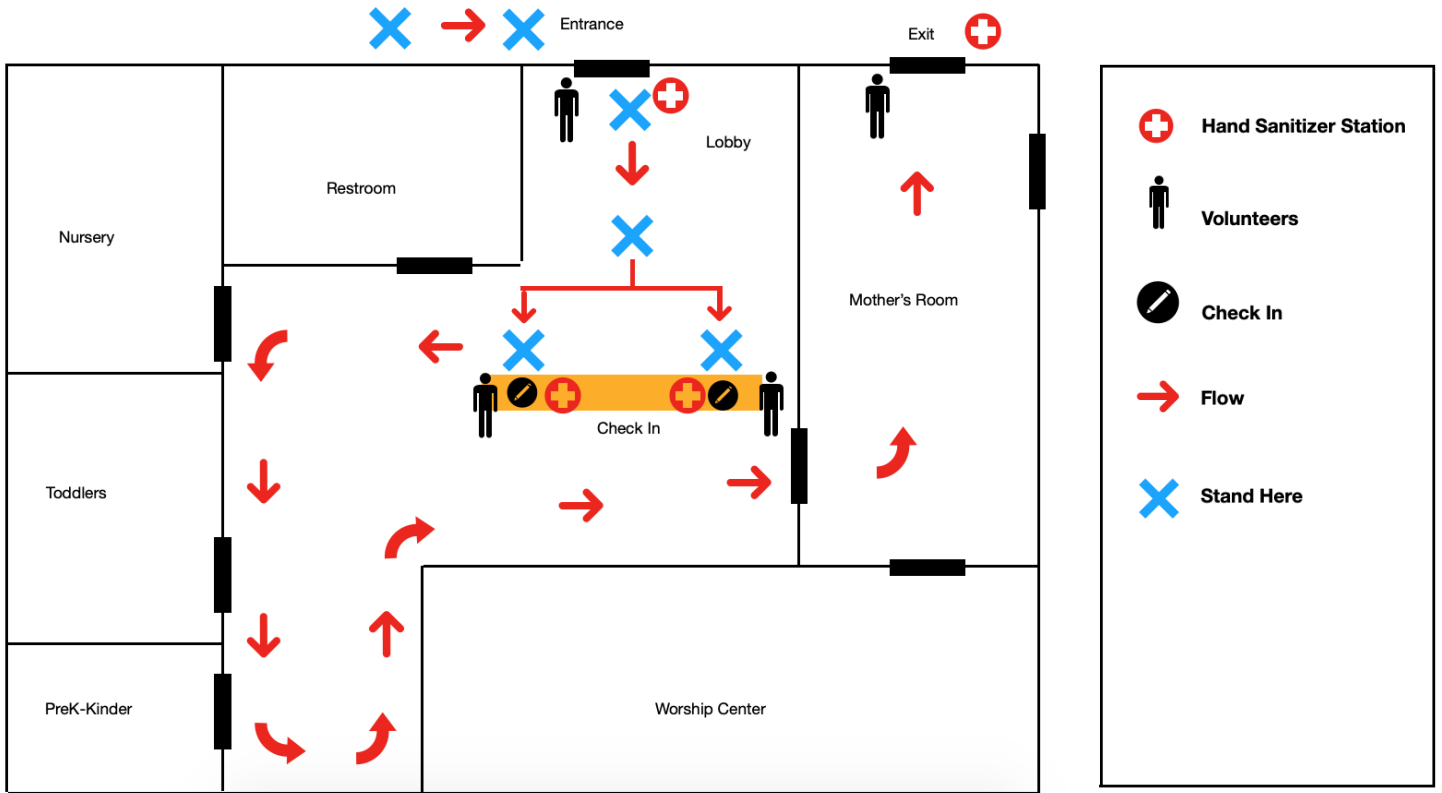
- We will be creating a more spacious classroom environment; taking out chairs and tables from toddlers and Pre K/Kinder class to be able to properly space children out during video and worship by using Hula-Hoops to create personal space. (each child will have their own hula hoop to create their own space.)
- The amount of toys out at once will be limited to simplify cleaning after each service.
- We will be playing "hands off" games (Simon Says, Follow the Leader, etc.)
- All water fountains will be closed.
- Max Capacity: 24

### Cleaning:

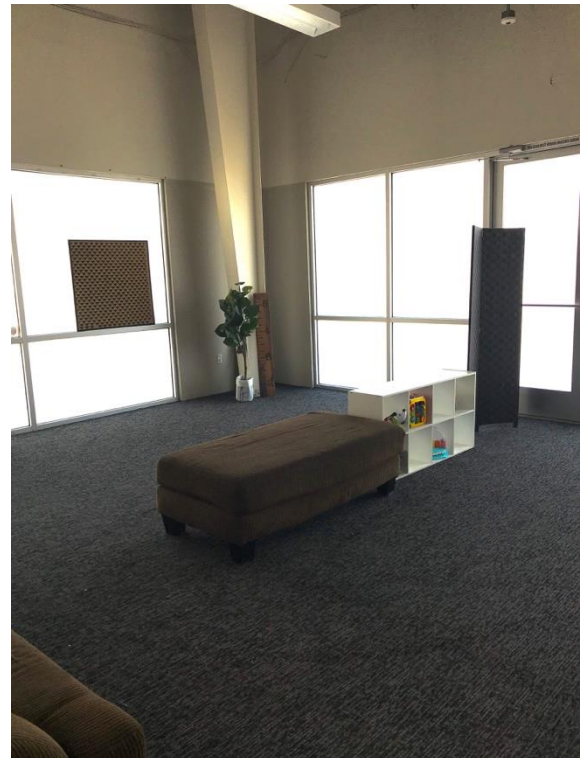
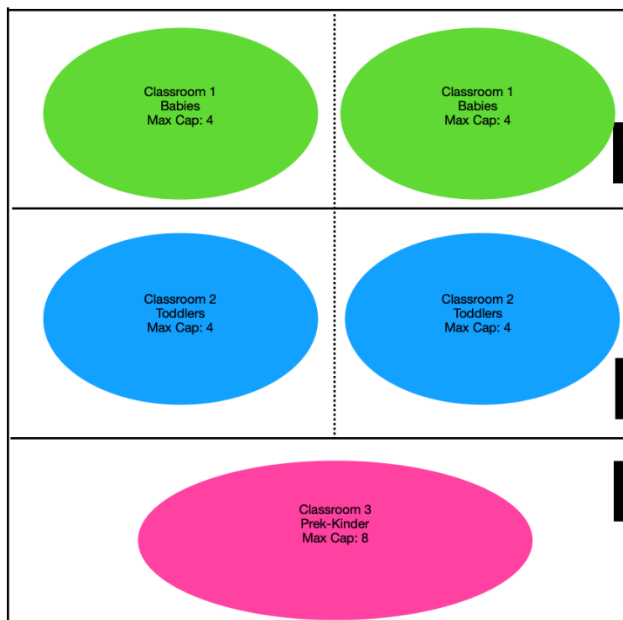
- All team members will wash hands upon arrival and departure. We will sanitize all surfaces, door handles, chairs, tables and toys in between services.
- There will be optional fabric masks for team members to wear if requested.
- Signage will be displayed on counter tops letting parents know our cleaning procedures.

# DISCOVERY KIDS EARLY CHILDHOOD

## Check In & Pick Up



## Classroom Structure



Safe • Secure • Spacious • Sanitized • Spectacular

# DISCOVERY KIDS

## ELEMENTARY

### Check In:

- Check-in iPads will be manned by a DK team member. Team members will check-in child/children and their parents will take the tags from the printer to place on their own child.
- New families will be checked-in by a DK team member by New Family Registration Card. All New Family bags and stickers will be set out on the check-in counter so parents can take one themselves.
- All doors will be propped open before and after service to avoid contact.
- Sick children/adults will not be allowed to enter the building under any circumstances.

### Pick Up:

- Parents will stand in “pick up” line outside the DK check in area. DK will be dismissed from their individual seats directly to their parents once their name is called.
- Parents and child/children will then exit through the bay door.
- There will be markers in the check-out line to help maintain a safe distance between parents.

### During Service:

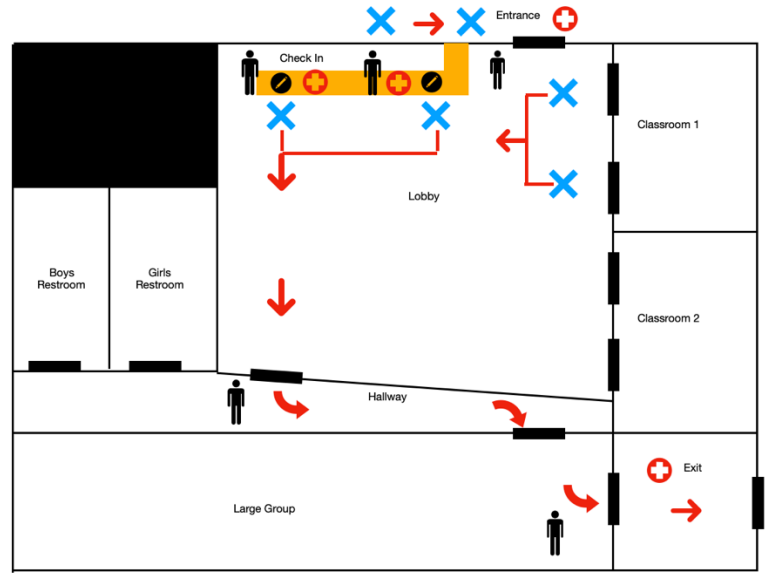
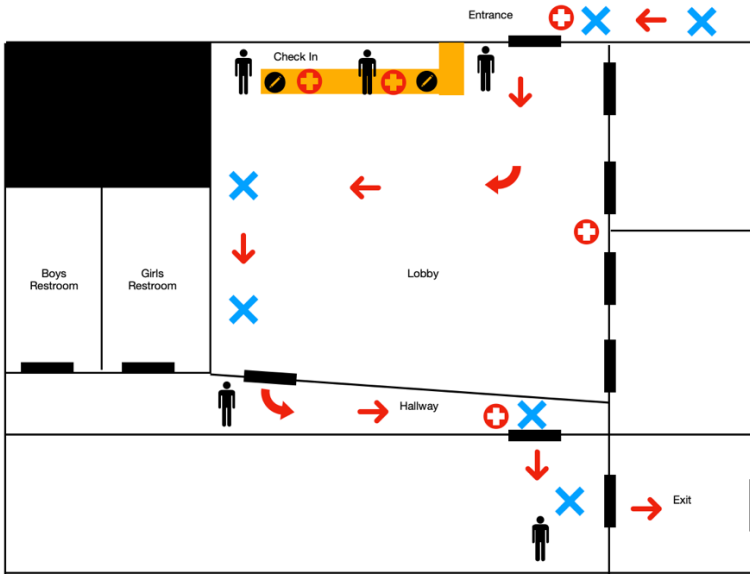
- After the Discovery Kids are checked in, they will be given a hula hoop and escorted into one of their designated classrooms where they will stay until they rotate for Large Group. There will be no seats, but the kids will sit in their assigned hula hoops for the duration of the service and asked to not invade the hula hoop space of other kids.
- The service will be designed so that kids can stay in their own personal space. Discovery Kids are expected to stay in hula hoops for games, worship, and all other interactive parts of the service.

### Cleaning:

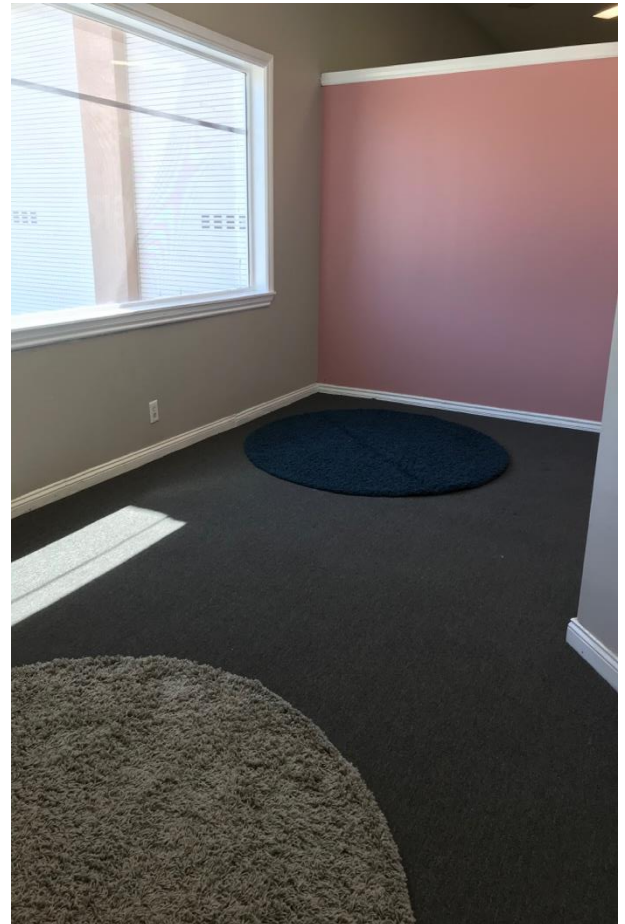
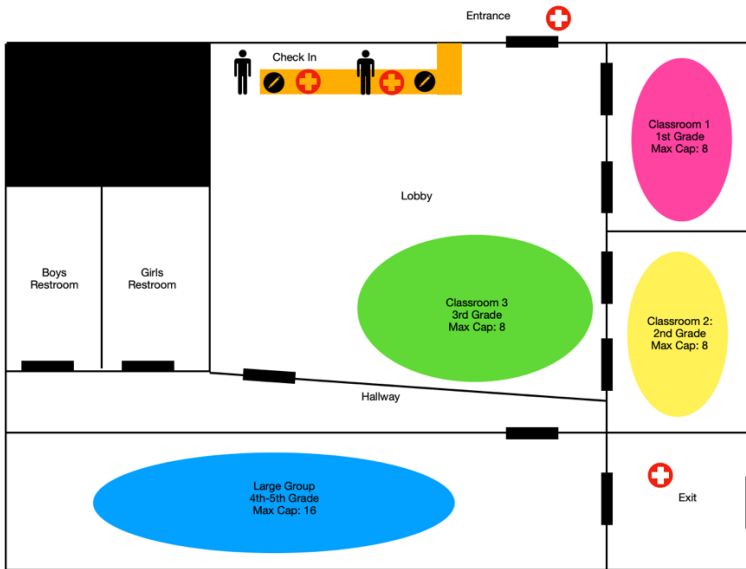
- A “COVID Cleaning Tote” will be provided to each ministry leader by the Facilities Team: (Lysol, disinfectant wipes, paper towels, gloves). The team will wipe down all countertops, door handles, bathrooms and all hard surfaces after every service and before check-in begins.

# DISCOVERY KIDS ELEMENTARY

## Check In & Pick Up



## Classroom Structure



Safe • Secure • Spacious • Sanitized • Spectacular

# FACILITIES

## General:

- All buildings will be sanitized between each service. Each campus will be deep cleaned and sanitized weekly.

## Lobby:

- All door handles, tables and surfaces will be properly wiped down after each service.
- Water fountains will be closed.
- We will be removing couches from common areas.
- Trash cans will be sanitized and wiped down after each service.
- The Cafe will be closed.

## Bathrooms:

- All stalls, sinks/faucets, handles, toilet seats, soap dispensers, and hand sanitizer dispensers will be wiped down and sanitized after each use.

## Mother's Room:

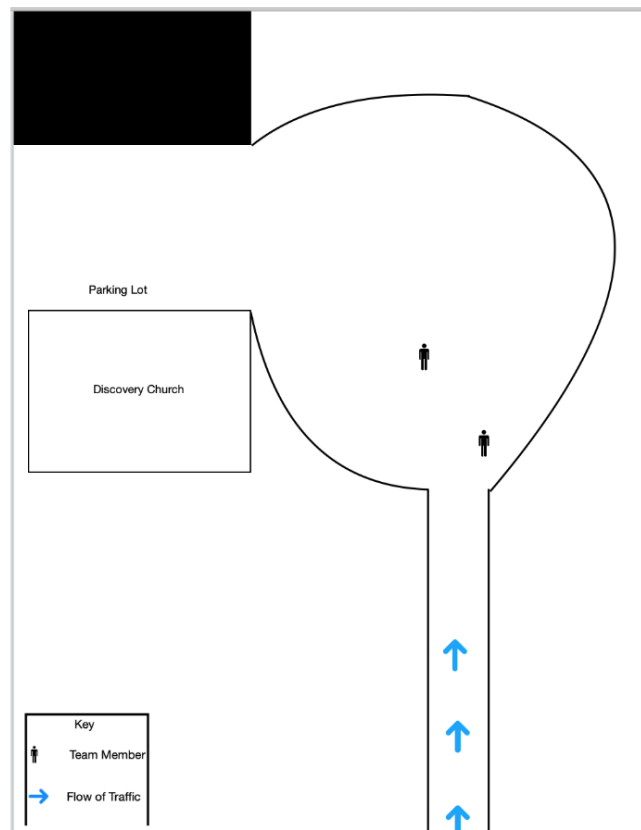
- All chairs, side tables, and changing tables will be wiped down and sanitized after each use.

## Worship Center:

- All door handles, offering buckets, and common surfaces will be wiped down and sanitized after each service.
- Chairs will be cleaned with a non-staining disinfectant cleaning solution between services.

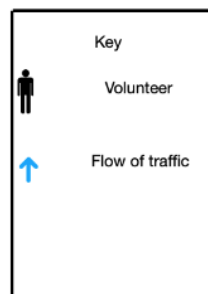
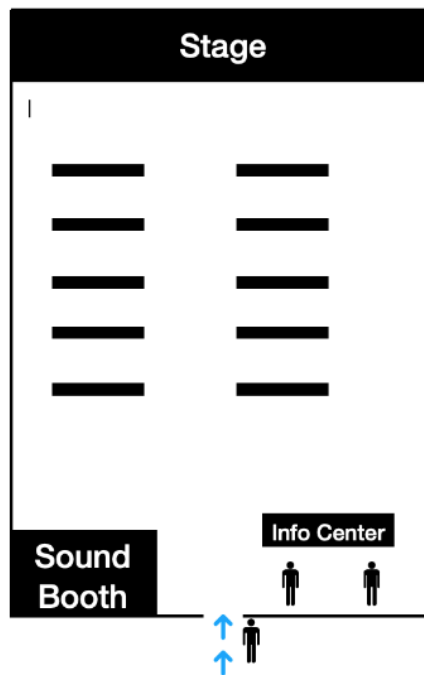
# NORTHWEST ARRIVAL

- To control service capacity, every guest will be asked to RSVP for the service they want to attend. Each service will have limited seating
- Our services will be entirely “contact free”. We will strive to create a safe environment where guests can come in and leave without touching a single person or object
- While guests are arriving, there will be CDC guidelines encouraging guests to follow safety precautions while on the Discovery Campus
- The First Impression Team will clean and disinfect frequently all high traffic areas before and after each service. (Door handles, counters, restrooms, kids spaces, etc.)
- The facility will be deep cleaned and disinfected throughout the week to ensure facilities are kept clean and safe
- The seating arrangements in the Worship Center have been modified to keep guests approximately 6 feet apart with 2 chairs between family units. The Ushers will help direct guests where to sit in the Worship Center
- We will have disposable face masks in a container for all First Impression Team members to wear while on the Discovery Campus



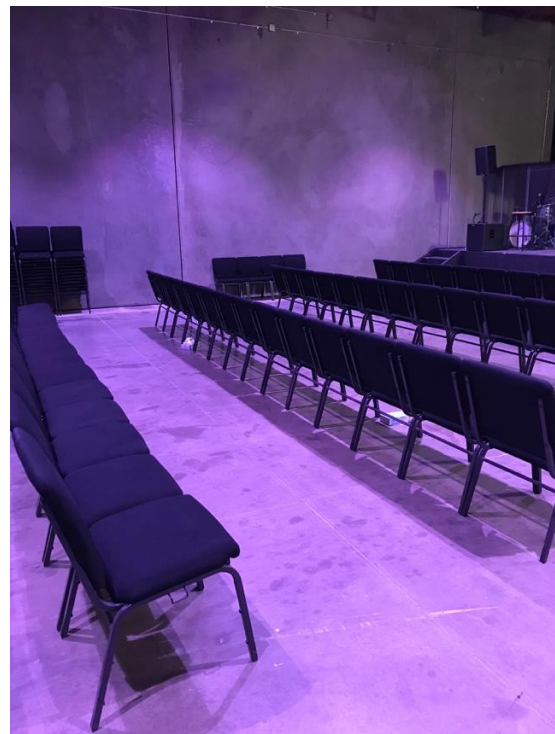
# 1ST IMPRESSION TEAM

- All team members will be passionate and life giving when welcoming guests with a wave and verbal greeting
- There will be no touching, hugging, or handshakes between team members and guests
- Team members will have a face mask worn at all times
- Every door will be either held opened by a team member or propped open to help guests enter and exit the building in a secure and spacious manner
- Lobby, restroom, and worship center door handles will be disinfected between each service
- Connection cards will be strongly encouraged to be filled out online
- There will be no coffee, water, or donuts provided for guests or team members
- Team member check in will be on personal cell phone using the “Church Center” app
- The Information Center will have two team members stationed to answer any questions guests may have
- All team members will be encouraged to sanitize their hands throughout the service
- There will be no golf cart operations to transport any guests
- Outdoor signage will remain the same

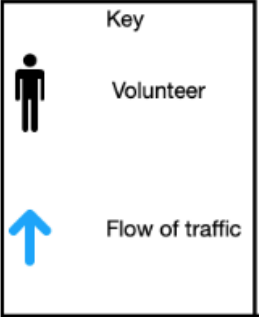
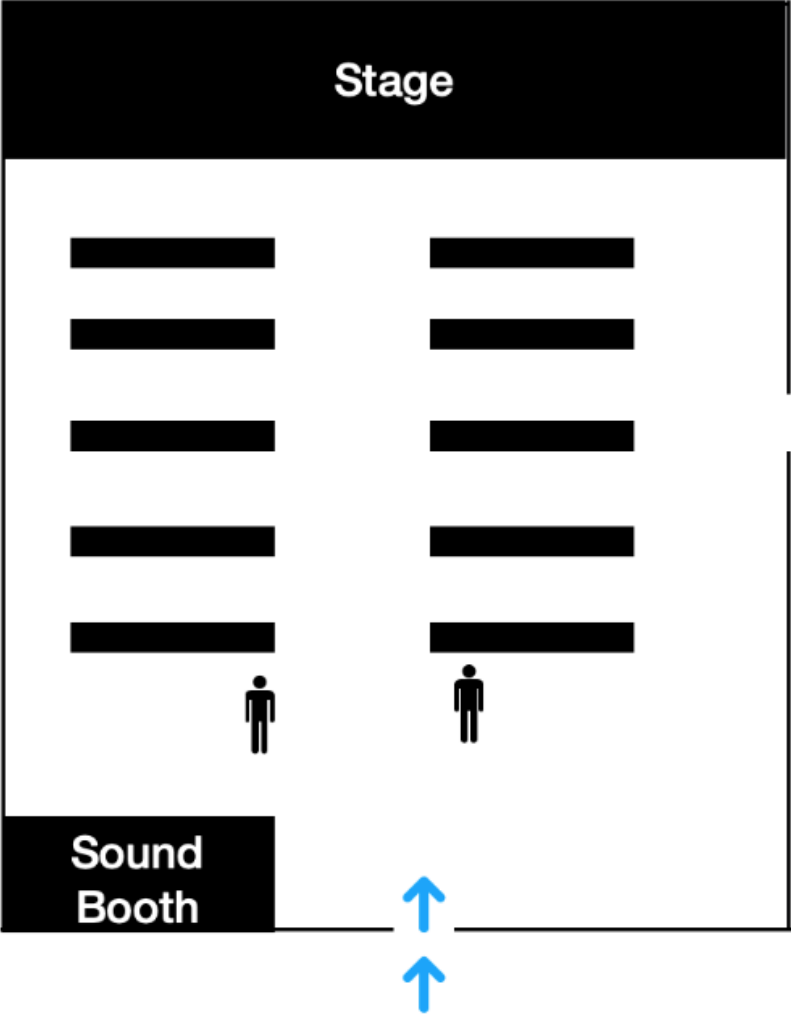


# USHER TEAM

- Worship center doors will be propped open until the countdown begins. There will be two ushers on each side of the Worship Center doors ready to assist in seating arrangements for all guests
- There will be no hugs, handshakes, or high fives given at any moment. Ushers will ask guests to sit with their family and make sure there is a two seat gap between different families.
- All ushers will be wearing masks and utilizing light wands to guide guests to their seats
- Each usher will be strategically placed to avoid congregating in the back of the Worship Center
- If there is a guest upset about the precautions we are taking, we will kindly let them know that it is not about us, and we've been entrusted to keep our guests safe. We are prepared to communicate with team members who might now be able to serve right now.
- The Ushers will not be passing around offering buckets. Ushers will stand in the back to receive any offering and there will be giving stations near the Worship Center doors, which will be sanitized after each service
- The offering baskets will be cleaned and disinfected after every service



# TEAM POSITIONS - WORSHIP CENTER



# DISCOVERY KIDS

## Check In:

- One of our Discovery Kids team members will be stationed at the Check In table to assist with checking in families.
- Parent/Guardian will take the child/children's name tag and place it on the front or back of the child/children's shirt.
- The check-in station will be pulled out and placed in front of the opening into the kids ministry area creating a space for parents to come in, check in, then exit back through the main doors.

## Pick Up:

- There will be assigned lines for pick up and drop off. We will have signage on Stanchions at the entrance and arrows on the ground to direct families where to go.
- Team members will be directing families to the exit.
- Two families will be allowed to enter at a time for both drop off and pick up.
- Parents who are picking up will enter 2 at a time to pick up child/children then will exit through the door they came in.

## During Service:

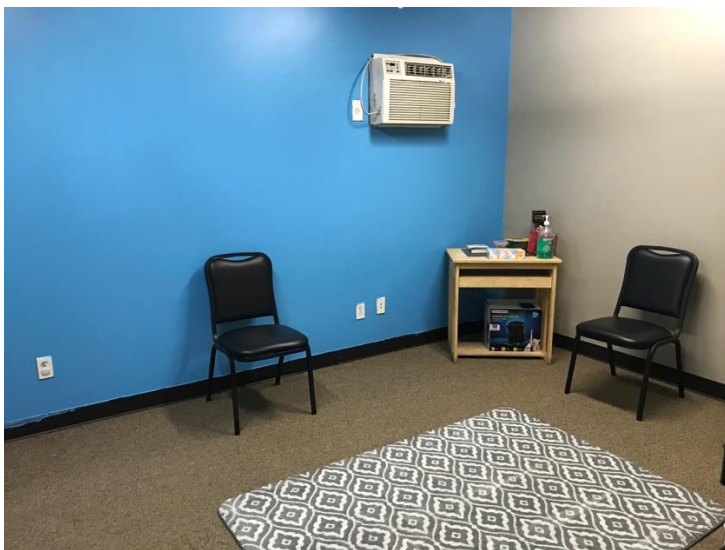
- We will be creating a more spacious classroom environment; taking out chairs and tables from all classes to be able to properly space children out during video and worship. By using Hula-Hoops, we will create personal space. (each child will have their own hula hoop for the duration of the service provided by Discovery Church.)
- The amount of toys out at once will be limited to simplify cleaning after each service.
- We will be playing "hands off" games (Simon Says, Follow the Leader, etc.)
- All water fountains will be closed and we will not be providing snacks during this time.
- Max Capacity: 16

## Cleaning:

- All team members will wash hands upon arrival and departure. We will sanitize all
- surfaces, door handles, chairs, tables and toys in between services.
- There will be optional fabric masks for team members to wear if requested.
- Signage will be displayed on counter tops letting parents know our cleaning procedures.

# DISCOVERY KIDS

## Check In & Pick Up



Safe • Secure • Spacious • Sanitized • Spectacular

# FACILITIES

## General:

- All buildings will be sanitized between each service. Each campus will be deep cleaned and sanitized weekly.

## Lobby:

- All door handles, tables and surfaces will be properly wiped down after each service.
- Water fountains will be closed.
- We will be removing seating from common areas.
- Trash cans will be sanitized and wiped down after each service.
- The Cafe will be closed.

## Bathrooms:

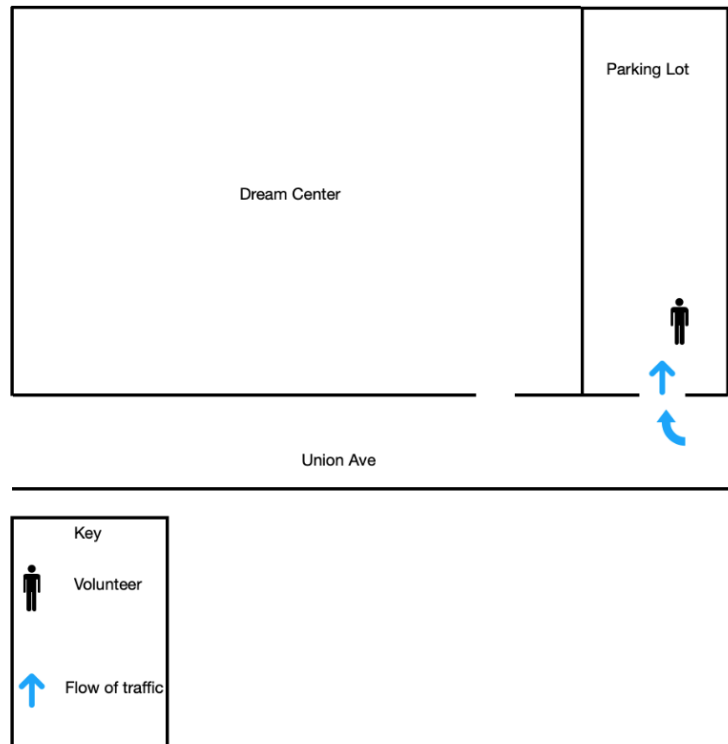
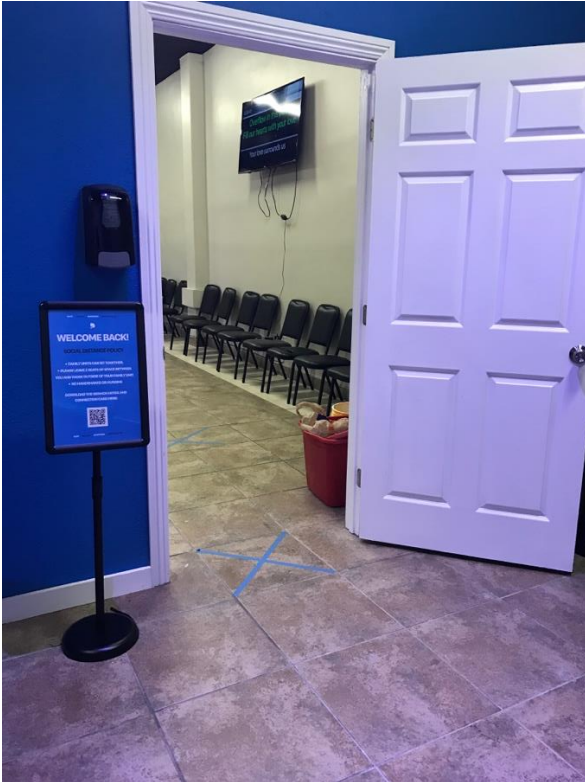
- All stalls, sinks/faucets, handles, toilet seats, soap dispensers, and hand sanitizer dispensers will be wiped down and sanitized after each use.

## Worship Center:

- All door handles, offering buckets, and common surfaces will be wiped down and sanitized after each service.
- Chairs will be cleaned with a non-staining disinfectant cleaning solution between services.

# DREAM CENTER ARRIVAL

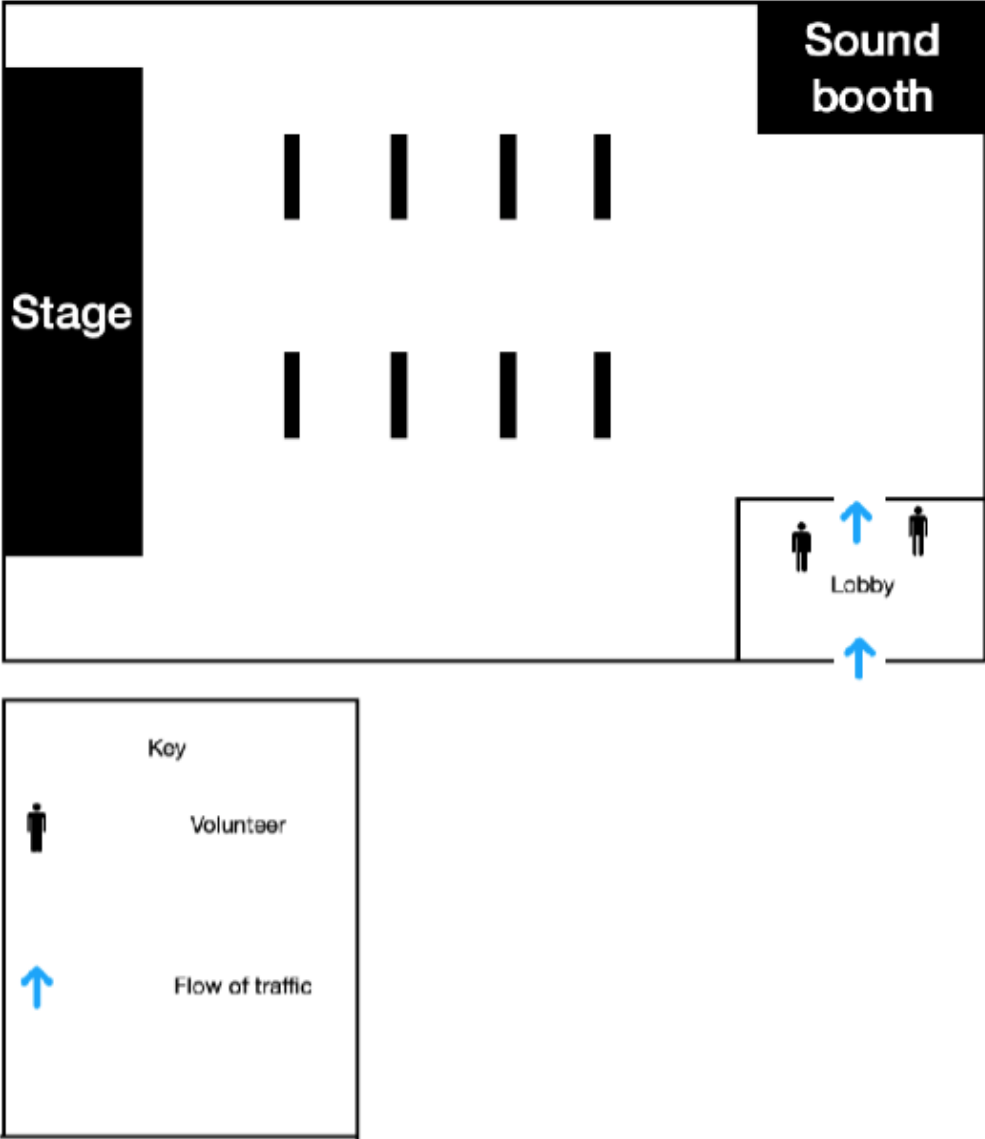
- To control service capacity, every guest will be asked to RSVP for the service they want to attend. Each service will have limited seating
- Our services will be entirely “contact free”. We will strive to create a safe environment where guests can come in and leave without touching a single person or object
- While guests are arriving, there will be CDC guidelines encouraging guests to follow safety precautions while on the Discovery Campus
- The First Impression Team will clean and disinfect frequently all high traffic areas before and after each service. (Door handles, counters, restrooms, kids spaces, etc.)
- The facility will be deep cleaned and disinfected throughout the week to ensure facilities are kept clean and safe
- The seating arrangements in the Worship Center have been modified to keep guests approximately 6 feet apart with 2 chairs between family units. The Ushers will help direct guests where to sit in the Worship Center
- We will have disposable face masks in a container for all First Impression Team members to wear while on the Discovery Campus



# 1ST IMPRESSION TEAM

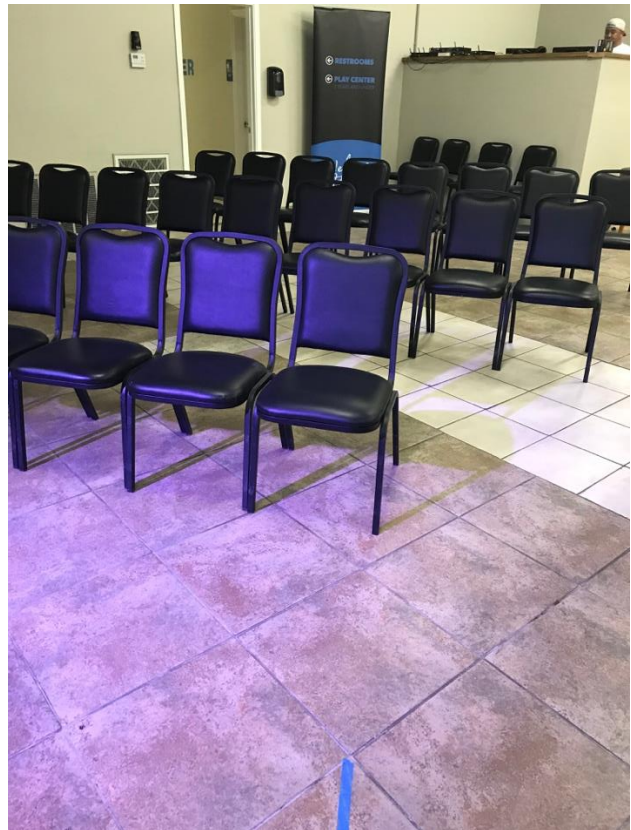
- All team members will be passionate and life giving when welcoming guests with a wave and verbal greeting
- There will be no touching, hugging, or handshakes between team members and guests
- Team members will have a face mask worn at all times
- Every door will be either held opened by a team member or propped open to help guests enter and exit the building in a secure and spacious manner
- Lobby, restroom, and worship center door handles will be disinfected between each service
- Connection cards will be strongly encouraged to be filled out online
- There will be no coffee, water, or donuts provided for guests or team members
- Team member check in will be on personal cell phone using the “Church Center” app
- The Information Center will have two team members stationed to answer any questions guests may have
- All team members will be encouraged to sanitize their hands throughout the service
- There will be no golf cart operations to transport any guests
- Outdoor signage will remain the same

# TEAM POSITIONS - LOBBY

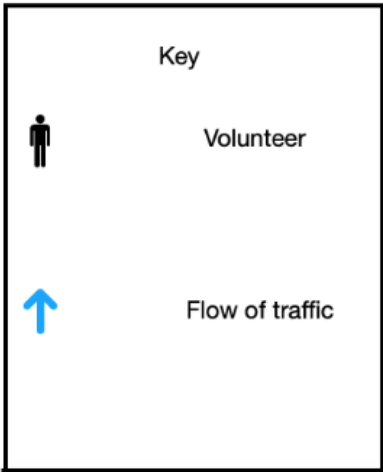
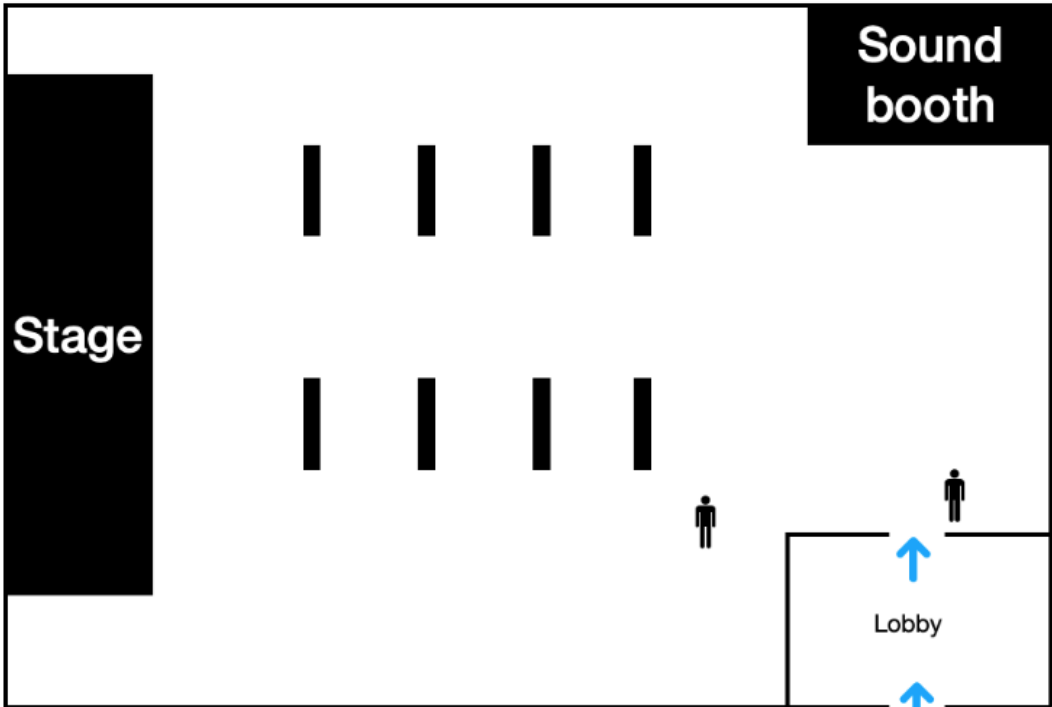


# USHER TEAM

- Worship center doors will be propped open until the countdown begins. There will be two ushers on each side of the Worship Center doors ready to assist in seating arrangements for all guests
- There will be no hugs, handshakes, or high fives given at any moment. Ushers will ask guests to sit with their family and make sure there is a two seat gap between different families.
- All ushers will be wearing masks and utilizing light wands to guide guests to their seats
- Each usher will be strategically placed to avoid congregating in the back of the Worship Center
- If there is a guest upset about the precautions we are taking, we will kindly let them know that it is not about us, and we've been entrusted to keep our guests safe. We are prepared to communicate with team members who might now be able to serve right now.
- The Ushers will not be passing around offering buckets. Ushers will stand in the back to receive any offering and there will be giving stations near the Worship Center doors, which will be sanitized after each service
- The offering baskets will be cleaned and disinfected after every service



# TEAM POSITIONS - WORSHIP CENTER



Safe • Secure • Spacious • Sanitized • Spectacular

# DISCOVERY KIDS

## EARLY CHILDHOOD

### Check In:

- One of our Discovery Kids team members will be stationed at the Check In table to assist with checking in families.
- Parent/Guardian will take the child/children's name tag and place it on the front or back of the child/children's shirt.
- The check-in station will be pulled out and placed in front of the opening into the kids ministry area creating a space for parents to come in, check in, then exit back through the main doors.

### Pick Up:

- There will be assigned lines for pick up and drop off. We will have signage on Stanchions at the entrance and arrows on the ground to direct families where to go.
- Team members will be directing families to the exit.
- Two families will be allowed to enter at a time for both drop off and pick up.
- Parents who are picking up will enter 2 at a time to pick up child/children then will exit through the door they came in.

### During Service:

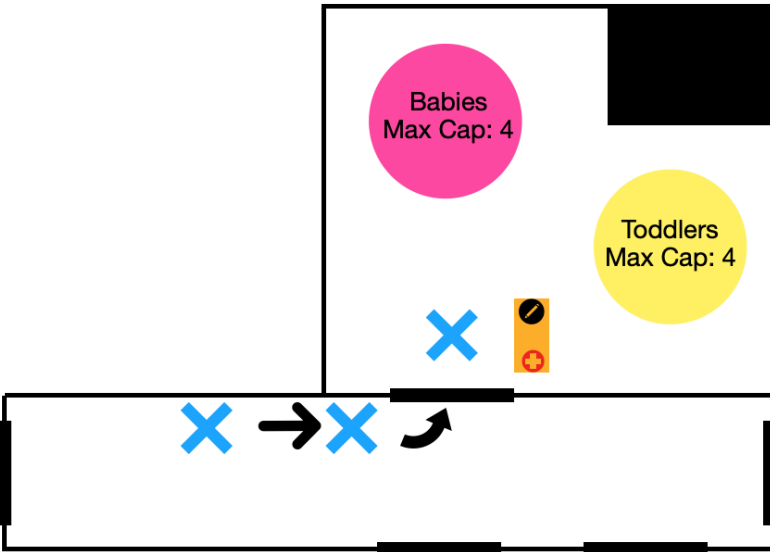
- We will be creating a more spacious classroom environment; taking out chairs and tables from all classes to be able to properly space children out during video and worship. By using Hula-Hoops, we will create personal space. (each child will have their own hula hoop for the duration of the service provided by Discovery Church.)
  - The amount of toys out at once will be limited to simplify cleaning after each service.
  - We will be playing "hands off" games (Simon Says, Follow the Leader, etc.)
  - All water fountains will be closed and we will not be providing snacks during this time.
- Max Capacity: 16

### Cleaning:

- All team members will wash hands upon arrival and departure. We will sanitize all
- surfaces, door handles, chairs, tables and toys in between services.
- There will be optional fabric masks for team members to wear if requested.
- Signage will be displayed on counter tops letting parents know our cleaning procedures.

# DISCOVERY KIDS EARLY CHILDHOOD

Check In & Pick Up



Safe • Secure • Spacious • Sanitized • Spectacular

# DISCOVERY KIDS

## ELEMENTARY

### Check In:

- One of our Discovery Kids team members will be stationed at the Check In table to assist with checking in families.
- New families will be checked-in by a DK team member by New Family Registration Card. All New Family bags and stickers will be set out on the check-in counter so parents can take one themselves.
- All doors will be propped open before and after service to avoid contact.
- Sick children/adults will not be allowed to enter the building under any circumstances.

### Pick Up:

- Parents will stand in “pick up” line outside the DK check in area. DK will be dismissed from their individual seats directly to their parents once their name is called.
- Children will then proceed to exit through the main door.
- There will be markers in the check-out line to help maintain a safe distance between parents.

### During Service:

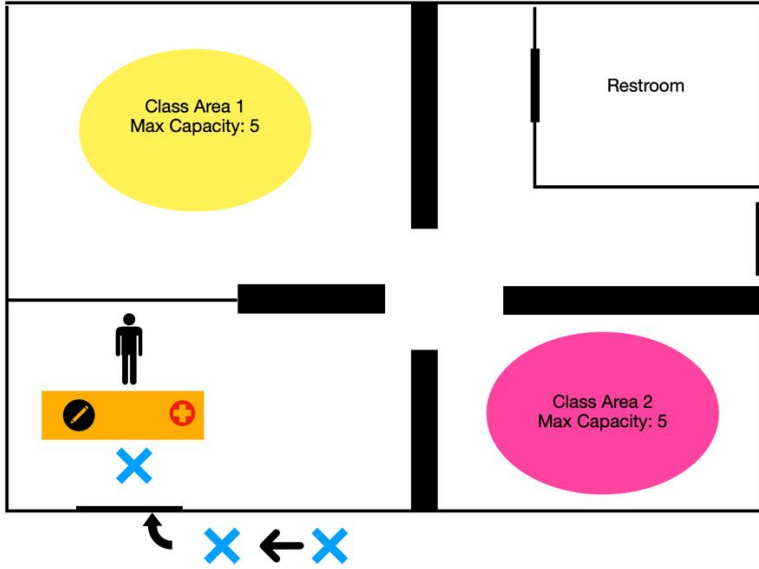
- After the Discovery Kids are checked in, they will be given a hula hoop and escorted into one of their designated class areas where they will stay until they rotate for Large Group. There will be no seats, but the kids will sit in their assigned hula hoops for the duration of the service and asked to not invade the hula hoop space of other kids.
- The service will be designed so that kids can stay in their own personal space. Discovery Kids are expected to stay in hula hoops for games, worship, and all other interactive parts of the service.

### Cleaning:

- A “COVID Cleaning Tote” will be provided to each ministry leader by the Facilities Team: (Lysol, disinfectant wipes, paper towels, gloves). The team will wipe down all countertops, door handles, bathrooms and all hard surfaces after every service and before check-in begins.

# DISCOVERY KIDS ELEMENTARY

## Check In & Pick Up



Safe • Secure • Spacious • Sanitized • Spectacular

# FACILITIES

## General:

- All buildings will be sanitized between each service. Each campus will be deep cleaned and sanitized weekly.

## Lobby:

- All door handles, tables and surfaces will be properly wiped down after each service.
- Water fountains will be closed.
- We will be removing couches from common areas.
- Trash cans will be sanitized and wiped down after each service.
- The Cafe will be closed.

## Bathrooms:

- All stalls, sinks/faucets, handles, toilet seats, soap dispensers, and hand sanitizer dispensers will be wiped down and sanitized after each use.

## Mother's Room:

- All chairs, side tables, and changing tables will be wiped down and sanitized after each use.

## Worship Center:

- All door handles, offering buckets, and common surfaces will be wiped down and sanitized after each service.
- Chairs will be cleaned with a non-staining disinfectant cleaning solution between services.



 DISCOVERY **CHURCH**