

## // CONNECTING TO NCC MAIN OFFICE VIA MAC

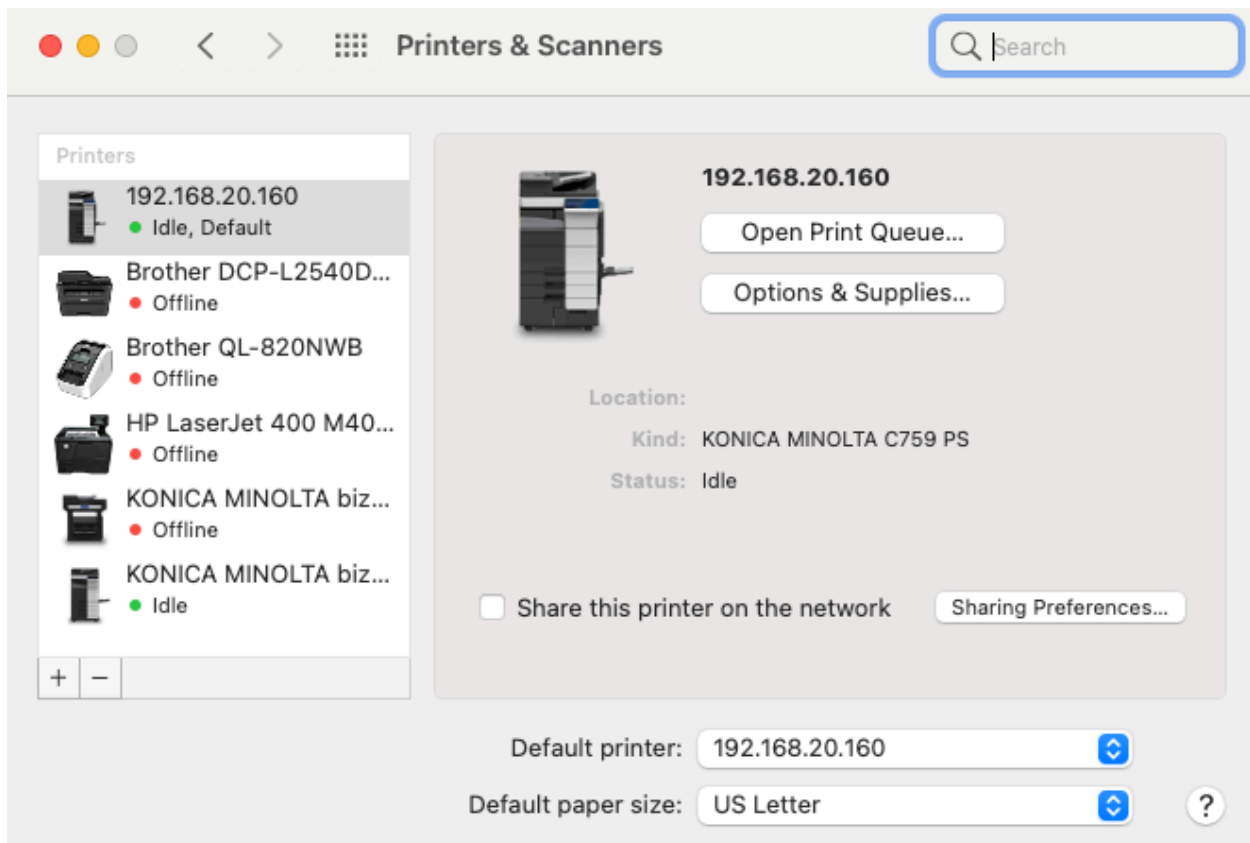
### STEP 1. DOWNLOAD YOUR DEVICE DRIVER

<https://onyxweb.mykonicaminolta.com/OneStopProductSupport?appMode=public&productId=2086&categoryId=1&subCategoryId=undefined>

### STEP 2. INSTALL DRIVER

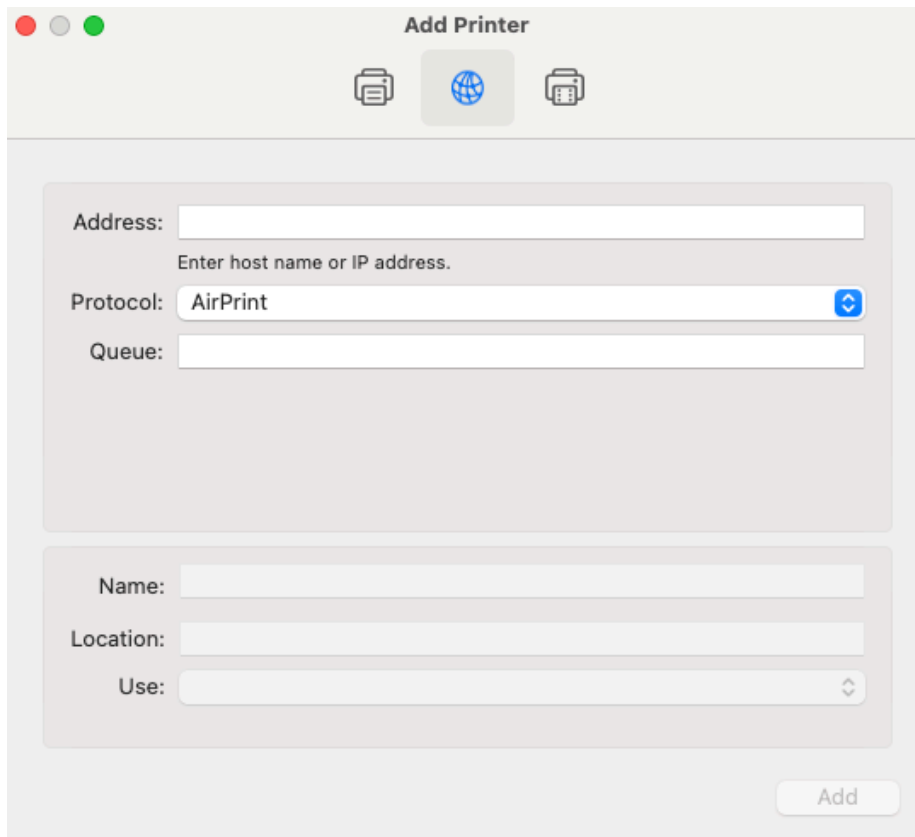
### STEP 3. OPEN PRINTERS & SCANNERS TO ADD

SYSTEM PREFERENCES>PRINTERS & SCANNERS> + (ADD NEW PRINTER)



## STEP 4. ADD VIA IP

USE THIS ADDRESS: **192.168.20.160**



**Add Printer**

Address:   
Enter host name or IP address.

Protocol:

Queue:

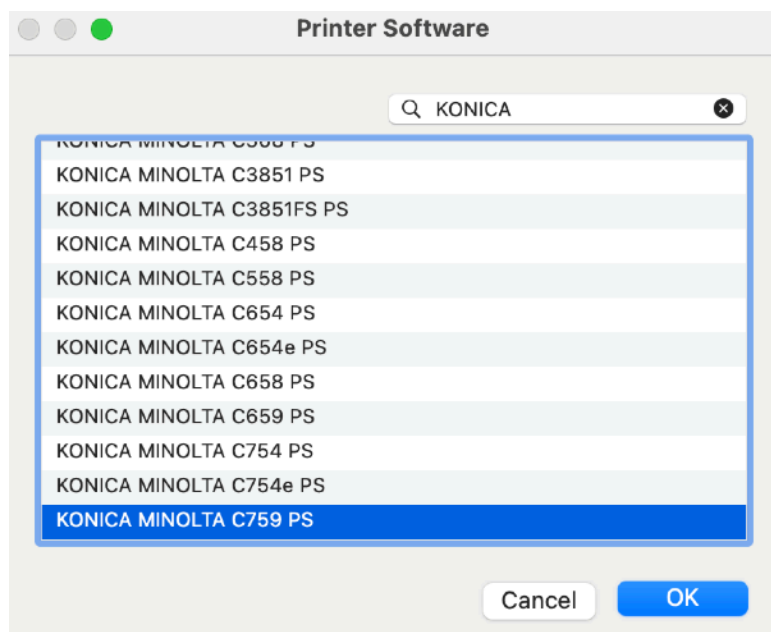
Name:

Location:

Use:

Add

**USE: KONICA MINOLTA C759 PS**



**Printer Software**

Q KONICA

- KONICA MINOLTA C3851 PS
- KONICA MINOLTA C3851FS PS
- KONICA MINOLTA C458 PS
- KONICA MINOLTA C558 PS
- KONICA MINOLTA C654 PS
- KONICA MINOLTA C654e PS
- KONICA MINOLTA C658 PS
- KONICA MINOLTA C659 PS
- KONICA MINOLTA C754 PS
- KONICA MINOLTA C754e PS
- KONICA MINOLTA C759 PS**

Cancel OK

## STEP 5. SET OPTIONS

USE THESE:

General Options Supply Levels

To take full advantage of your printer's options, confirm that they are accurately shown here. For information on your printer and its optional hardware, check the printer's documentation.

Paper Source Unit: LU-205

Finisher: FS-537 + SD-512

Punch Unit: PK-523 (2/3-Hole)

Z-Fold Unit: None

Post Inserter: None

Security Document Setting: Do Not Release Secure Print

- Hard Disk
- Secure Print Only
- Allow Public User
- Paper Settings for Each Tray

Cancel OK

**REMINDERS:** BE SURE YOU ARE ON CHAPEL-STAFF, OR THE PRINTER WON'T WORK!