

CHURCH YEAR  
2025-2026

# ANNUAL REPORT



# 2025-2026 CHURCH BOARD

Church Board Secretary: Lon Dagley  
Church Board Treasurer: Alisha Roberts

## Board of Trustees

Chair: Terry Corzine  
Lon Dagley  
Kelly Robinson  
Starla Rowell  
Mark Stevenson  
Keri Westmark

## Board of Stewards

Chair: Nancy Wilkerson  
Greg Aslinger  
Jolene Cornelius  
Mary Dagley  
Daniel Herrera  
Jason Roberts

NDI President: Lincoln Broadbooks  
NMI President: Glynda Wesley  
NYI President: Kyle Gwaltney

The Manual of the Church of the Nazarene states in section 125.4 under "125. The administrative duties of a pastor are to:"

"125.4. Read to the congregation the Constitution of the Church of the Nazarene and the Covenant of Christian Conduct contained in paragraphs 1-21, 28-33, both inclusive, within each year, or have this section of the Manual distributed annually to the members of the church. (116)"

**Scan the QR code for quick access  
to the Current Nazarene Manual.**



# OUR BELIEFS

At Shawnee Church of the Nazarene we are called to be an intentional community. In doing life together, we discover our identity as a people who GATHER, GIVE, and GROW. As we gather for worship and fellowship, we learn to love each other as Christ has loved us. Discovering our identity in Christ calls us into rhythms of compassion, generosity, and service. All the while, we engage in discipleship through prayer and the ministry of the Word that our faith would continue to grow.

Our identity is found through our relationship with God and we desire to help others discover their new identity in Christ as well. We believe people are invited to respond to relationship with God because of the life, death, and resurrection of Jesus Christ. We believe that as a part of responding to the grace of God in our lives we are called to then share the love of God with others.

Matthew 28:19 says, “Therefore, go and make disciples of all nations, baptizing them in the name of the Father and of the Son and of the Holy Spirit.”

Jesus shows us in his life what it means to welcome everyone into the kingdom of God. Jesus welcomed religious people and outsiders, rich and poor, the sick and the forgotten, society’s outcasts— We strive to follow the example of Jesus and to welcome everyone into the kingdom of God.

“Love each other like the members of your family. Be the best at showing honor to each other. Don’t hesitate to be enthusiastic – be on fire in the Spirit as you serve the Lord! Be happy in your hope, stand your ground when you’re in trouble, and devote yourselves to prayer.

Contribute to the needs of God’s people, and welcome strangers into your home. Bless people who harass you – bless and don’t curse them. Be happy with those who are happy, and cry with those who are crying.

Consider everyone as equal, and don’t think that you’re better than anyone else. Instead, associate with people who have no status. Don’t think that you’re so smart.

Don’t pay back anyone for their evil actions with evil actions, but show respect for what everyone else believes is good. If possible, to the best of your ability, live at peace with all people." - Romans 12:10-19

SCAN FOR MORE ON  
THE CHURCH OF THE  
NAZARENE BELIEFS





# PASTOR GAVIN

## LEAD PASTOR

SINCE SEPTEMBER 2024

4

After more than a year and a half, having now experienced a full church year from start to finish, Shawnee Naz has truly become our home. We no longer feel new because you have welcomed us as family. Thank you for your generous hospitality. The Spirit of the Lord is clearly at work in our faith community. Over the past year, we have received eight new members and celebrated two baptisms.\* Participation in midweek ministries is increasing, and Sunday worship attendance continues to trend upward.

We have also responded faithfully to significant financial needs. This year, we completed important facility repairs, received 100% of our pledged Bold Vision, Bold Faith commitments, and sustained our ongoing ministerial support. Financially, we are stabilizing, and we trust the Lord to remain faithful as our ministry and community presence grow.

Thank you for your thoughtful participation in the January congregational survey. Your feedback affirmed areas of strength in meeting spiritual needs while also identifying a clear desire for deeper connection—both within our church and in our broader community. In response, our leadership team is actively developing new opportunities for service and connection, both locally and beyond. Many of these will launch during our missions emphasis month this fall.

As we look ahead, I am calling us to focus on embodying the characteristics of an authentic faith community. We have begun expressing this through the rhythm of “**Gather, Give, Grow.**”

- We **gather** for worship, fellowship, and shared life.
- We **give** of our time, resources, and compassion.
- We **grow** as disciples who invite others into the way of Christ.

There is no hidden formula for greater impact or shortcut to increased attendance, generosity, or influence. Our calling is simpler and deeper: to faithfully embody the way of Christ together in our community. May the Lord strengthen us to live into this high calling.

### **Verse of the Year:**

“Let us hold fast to the confession of our hope without wavering, for he who has promised is faithful. And let us consider how to provoke one another to love and good deeds, not neglecting to meet together, as is the habit of some, but encouraging one another, and all the more as you see the Day approaching.” (Hebrews 10:23–25)

### **Yearly Prayer Focus:**

That we would deeply consider our call to the faithful stewardship of our time, giftings, and resources so that we may more fully embody the life of an authentic Christian community.

\*These numbers include both English and Spanish congregations.

# PASTOR MIGUEL

## HISPANIC PASTOR

SINCE SEPTEMBER 2007



I give thanks to my God for allowing me to serve in His church as pastor!

### Preaching

Throughout the 52 weeks of the year, I preached the Word of God Sunday after Sunday at Shawnee Naz Church, and on several occasions, I invited visitors to receive Jesus as their personal Savior. The sermons were also broadcast via the internet to Mexico—specifically to Guadalajara, Jalisco—where we have established groups that we have been reaching during our visits to that country. We also held several joint worship services alongside our English-speaking brethren.

### Evangelism

During this year, we faced some challenges in presenting Jesus due to the change in government, as many people preferred not to attend church out of fear of ICE. However, whenever an opportunity arose, we presented Jesus, and approximately six people received the Gospel—thanks be to Jesus!

### Visitation

Throughout this year, we were present in hospitals, visiting sick members of our congregation and friends, and praying for their healing and recovery. We also dedicated several homes, offering prayers of blessing over them.

### Compassion

During this year, we assisted those in need by providing small food parcels, as well as used and new clothing whenever possible.

### Membership

This year, three new members were received into the congregation—thanks be to God!

**Theological Studies** This year, three of our brethren graduated from theological studies: Two completed theological studies through ENTE, and one earned a Bachelor's degree in Theology. Additionally, I attended two district-level theological courses. Also, in November 2025, we traveled to Guadalajara to visit and preach the Word of God in the homes of our new brethren there. We established two groups: one in Guadalajara and another in San Patricio Melaque. One group consisted of 14 people, and the Guadalajara group had 18 members. We also prayed for a young woman named Blanca—a 22-year-old suffering from a brain ailment—who was healed thanks to prayer to Jesus!



# PASTOR JEFF

## WORSHIP ARTS PASTOR

SINCE MARCH 2020

It is a privilege to have completed my sixth year as Worship Arts Pastor at Shawnee Nazarene. I am grateful to serve under the leadership of Pastor Gavin and alongside such a dedicated staff, church board, and team of volunteers.

Planning and preparing for our Sunday morning Community Worship Services remains the primary focus of my role. These services continue to be a vibrant and essential part of our church life. I believe that active participation in worship reflects a strong culture of engagement, shared ministry, and ownership. Our church demonstrates a healthy, collaborative model of worship when people contribute rather than simply attend.

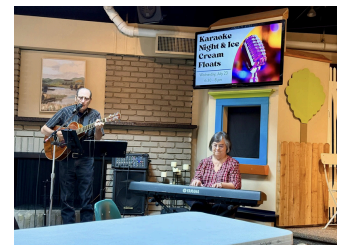


Over the past year, more than 95 children, youth, and adults have regularly participated in our Sunday morning services through singing, playing on the worship team, serving in media ministry, joining seasonal choirs, preparing and serving communion, decorating the sanctuary, and more. Each participant plays an important role in leading us in worship, and there is always room for others to get involved. This year’s ministry fair helped identify several new individuals interested in participating. We were also blessed to host Relentless from Mid-America Nazarene University, the First Act Theater Art Dance Troupe, and several guest speakers in our services.



This past year, we held seasonal choirs for Christmas and Easter. These opportunities for intergenerational ministry continue to be a meaningful encouragement to many. Special services and gatherings—such as our annual Christmas program, Christmas Eve, Ash Wednesday, and Good Friday—remain significant moments in the life of our church. I am especially thankful for the involvement of Adventure Time Preschool and Shawnee Nazarene Academy in our Christmas program.

Another highlight from the past year was Karaoke Night, part of our summer Mid-week Meetups. It was a fun and meaningful evening that blended worship and fellowship—and the ice cream floats were a hit. I hope you’ll join us this summer!



I look forward to all that God has in store for our church in the coming year. If you are interested in getting involved in any aspect of the Worship Arts Ministry or would like to share a cup of coffee, please feel free to reach out to me at [jeffg@shawneenaz.org](mailto:jeffg@shawneenaz.org).

7

# ERRIN SHULTZ

ADVENTURE TIME PRESCHOOL DIRECTOR  
SINCE JUNE 2020



Adventure Time Preschool is an outreach ministry of Shawnee Church of the Nazarene. Our mission is to prepare students and families for the academic journey ahead and to share with them that “God created them, He loves them and He wants to have a relationship with them”. ATPS (Adventure Time Preschool) first opened its doors to the community in the fall of 1973. Throughout the years, ATPS has served thousands of children and families.

The 2025-2026 school year has been my sixth year as Director of ATPS and my 25th year on staff. It is a joy to have built relationships with so many families who have had children come through the doors of Adventure Time Preschool. It’s especially heartwarming when a family contacts us and expresses their appreciation for the time that their child spent at ATPS. We often hear from Kindergarten teachers in the area that they can tell when a student has attended Adventure Time Preschool. All of those compliments are wonderful to hear. Academic preparation is important, but it’s not everything. We have a monthly Chapel Time with our students. At Christmas and Easter, we invite parents to attend Chapel Time with their children. I love these moments. Our students are learning every month that God created them, God loves them and that He wants to have a relationship with them. For some of our students(and their parents), this is the only time that they will hear about these truths. What a privilege it is to help lay an academic and spiritual foundation.

This 2025-2026 school year we had 42 students enrolled at ATPS representing 37 families and only 10% of those students attend Shawnee Church of the Nazarene on a regular basis. It is such a blessing to be able to reach out to our community with the message of hope year after year. ATPS is blessed with an amazing staff; Ruth Schick, Kim Turner, Cat Johnson, Courtney Schafersman, Kaitlyn Perrigo and Becky Boulware. Daily, this amazing staff pours into the lives of our students and their families.

Our partnership with Shawnee Nazarene Academy continues to grow. This year we attended a field trip to Kindergarten and a breakfast hosted by SNA, sat in on a Dr. Seuss themed story time in the SNA library, had a combined assembly with the Shawnee Fire Department and worked on an annual food drive together. We’ve also had the privilege to partner with Shawnee Church and SNA on community outreach events including Trunk-or-Treat in October and Easter Trunk Hop in March. Our students participated in classroom programs and in the Shawnee Church Christmas Program. I personally have met with and prayed with ATPS families as have our teachers.

I would like to say a special word of thanks to my husband James for all of the support that he gives to me and to the ministry of Adventure Time Preschool. Thanks also to Mark and Delia Stevenson, Mark and Ruth Schick, Pastor Gavin, Pastor Jeff, Terry Corzine, the Board of Trustees and Stewards, and the many volunteers who have donated their time and resources to help keep our facility well taken care of. Thank you Shawnee Church for your prayers and for helping Adventure Time Preschool to reach the families in our community.



# NANCY SHONAMON

## SHAWNEE NAZARENE ACADEMY

### PRINCIPAL

SINCE MAY 2021

8

#### School Overview

Shawnee Nazarene Academy was birthed in 2021 by a group of educators and interested parents. SNA complements the preschool ministry of Adventure Time Preschool and provides a choice for parents to continue their child's education through the ministries of Shawnee Church of the Nazarene. In the 2025-26 school year, SNA had an enrollment of 23 full time students and one part time student in Kindergarten through Seventh grade. A goal of 35 students has been set for the 2026-27 school year with the grade levels expanding through 8th grade. SNA's 17 families have continued to enroll their children in the school as well as telling their friends and families about this opportunity. Parents support this ministry through fundraising efforts, marketing support, planning events, and partnering us with field trips and various activities. Being the only K-8th grade opportunity for Nazarene education in the Kansas City District, we covet your prayers as we continue to develop future leaders for the Church of the Nazarene and the Kingdom of God.

#### Shawnee Nazarene Academy School Board

Nancy Shonamon, Chairperson/Principal Justin Shonamon, Marketing  
Gavin Fothergill, Vice Chair/Pastor Mary Dagley, Church Liaison  
Norm Waters, Financial Overseer Deb Corzine, Policy Overseer Trish Blount,  
Fundraising/Scholarships Dave Warner, Fundraising/Scholarships

#### Highlights for 2025-2026

- Enrollment: 24; K-7th grade
- Developed 7th grade program
- Created new school website
- Hired two full time teachers
- Restructured school board with assigned responsibilities
- Raised funds for new technology
- Supported families with scholarship funds
- Two families attended local church services
- Began accreditation processes
- Began implementation of student information system
- Continued bi-lingual chapel

#### Goals for 2026-2027

- Enrollment: 35; K-8th grade
- Develop 8th grade program
- Complete accreditation processes
- Complete implementation of FACTS student information system
- Raise funds for scholarships
- Nurture spiritual growth and encourage new baptisms
- Develop middle school specialty class program



# PASTOR ROY

## COUNSELING PASTOR

SINCE APRIL 2023



### **Position Summary**

The Counseling Pastor is responsible for working with the Lead Pastor to facilitate ways for the congregation and the community to have access to quality marriage and family therapy services in the context of a church setting and to provide family-based learning experiences to enhance family relationships that are rooted in biblical principles and lived out in the community ways that honor Jesus Christ.

### **Essential Duties and Responsibilities**

1. Provide marriage and family therapy to the congregation, and to the community at large for a standard fee in an open and inviting environment all featuring strictest confidentiality.
2. Attend monthly Board meetings as assigned.
3. Attend staff meetings as assigned.
4. Preach in the local church as needed.
5. Facilitate one small group weekly.

### **Goals for 2026-2027**

1. Continue to provide quality clinical services for church and community.
2. Collaborate with the Kansas City District Church of the Nazarene to create and provide assessments for persons called of God to ministry, specifically those on the ordination track.
3. Continue with the Kansas City District Church of the Nazarene as a member of the Ministerial Board charged with evaluating and recommending candidates for ordination in the Church of the Nazarene.
4. Continue to be involved with the General Church of the Nazarene in the Credential Review Committee, which is charged with reviewing cases where ministerial credentials have been surrendered and the applicants are desiring to have them restored.
5. Continue annual involvement with both the Southeast and Southwest Regional Church of the Nazarene to assess and position for success men and women on the ordination track.



# PASTOR JILL

## CHILDREN'S PASTOR

SINCE OCTOBER 2024

10

God is moving in the hearts and lives of kids and their families at Shawnee Church of the Nazarene. Thank you for allowing me to teach, train, disciple and lead children. I want to thank all the volunteers and leaders who came before me and led the Children's Ministry with grace and a heart for kids. A huge thank you to the Children's Ministry Leadership Team, as well!

### Areas of Responsibility

- Give direction and cohesion to Children's Ministry
- Secure leaders/helpers for The Neighborhood on Sunday mornings
- Secure leaders/helpers for Small Groups on Sunday mornings
- Prepare curriculum for the Neighborhood and Small Groups
- Coordination of volunteers at various levels and capacities
- Hold a CMLT (Children's Ministry Leadership Team) meeting on a monthly basis
- Prepare a monthly newsletter and email communicating updates in Children's Ministry/Keep information board updated
- Plan and prepare for various events with other volunteers - Missions Mart, Easter Trunk Hop, Wednesday night workshops and stations, Midweek Summer Meetups, Talent Show fundraiser, holiday parties and activities
- Secure volunteers to lead Lead Team
- Wednesday Night Quizzing and Activities
- Schedule and plan yearly volunteer training
- Keep in regular contact with families of Shawnee and reach out to new visitors
- Resource families with discipleship tools for home
- Represent Children's Ministry in staff meetings
- The CMLT leads various areas
  - Dani Gray - VBS Director/LEAD team
  - Jason Decker - Missions/BJF Liaison
  - Volunteer Needed - Small Group Coordinator
  - Ross Polete - Security
  - Nancy Shonamon - SNA Principal
  - Errin Shultz - ATPS Director
  - Jason Roberts - Cul-de-sac Coordinator/Board Representative
  - Jill Fothergill - Children's Pastor

## Highlights

- Started Bible buddies in January - reading the Word of God together each month
- Held Missions Mart in October
- Hosted family game night in February
- Summer Mid-week Meet-ups were a successful intergenerational time of fellowship
- Host 5th Sunday combined small group activity
- Wednesday Nights kids activities and participation has grown. We are averaging 20 kids 3 years old to 5th grade. Thankful for Wednesday night meals starting!
- Collaborated with SNA & ATPS for Trunk-or-Treat and the Community Easter Trunk Hop
- Delivered snacks to Bluejacket-Flint multiple times for both students and teachers
- Helped BJF families at Christmas
- Seven kids participated in Bible Quizzing
- Raised over \$320 dollars from a snack shack during district Kids Quiz meet at Shawnee
- Lead Team Program had 4 girls participate
- Vacation Bible School taught our kids to trust Jesus in a wild world - a church donated their decorations to us and then we donated them to the Korean Antioch Church of the Nazarene.
- Holding Kids Talent Show and all proceeds will go towards camp scholarships
- 11 kids participated in District Summer Camp
- 5 kids participated in Daycamp during District Assembly
- 5 kids participated in 3rd/4th grade district lock-in
- 4 girls participated in KCD Preteen retreat
- Kids sang "I Believe" during Easter service

## Goals

- For every child to know they are loved by Jesus and can have a relationship with Him
- Resource families with discipleship tools for home
- Continue to grow our pool of volunteers, especially for the Cul-de-sac, nursery and Wednesday night activities
- Create opportunities for intergenerational fellowship



# EMILY & KYLE GWALTNEY

12

## YOUTH LEADERS

SINCE JUNE 2025

This past year has been a meaningful and faith-filled season as we stepped into the role of serving in youth ministry at Shawnee Church of the Nazarene. Our desire has been to lead students into a lifelong relationship with Jesus Christ, encouraging them to grow in grace, pursue Christlike holiness, and actively participate in the life and mission of the Church.

We are deeply grateful for the opportunity to partner with families, church leadership, and our district in discipling the next generation. We are especially thankful for the warm welcome, encouragement, and ongoing support we have received from our church family. Your prayers, trust, and involvement have been vital to the growth, health, and fruitfulness of this ministry.

### Major Areas of Responsibility

- Give direction and cohesion to the youth ministry
- Planning and facilitating weekly youth services, small groups, and events
- Teaching biblically grounded lessons with an emphasis on Christlike living and holiness
- Creating opportunities for students to encounter God through worship, prayer, and the Word
- Providing mentorship, pastoral care, and spiritual guidance to students
- Encouraging student involvement in all areas of church life and ministry
- Organizing and coordinating retreats, camps, and service projects
- Connecting with district NYI events, initiatives, and leadership opportunities
- Recruiting, equipping, and supporting volunteer youth leaders and holding a monthly YMLT meeting
  - YMLT: Theresa Decker – Admin, Dani Gray – High School Sunday School, Kelly Robinson – Middle School Sunday School, Daniel Marvin – Teen Quizzing, Danielle Broadbooks – Fundraisers
- Leading and overseeing the NYI council and holding a monthly meeting
  - NYI Council: Kyle Gwaltney (NYI), Effie Broadbooks, Savannah Gray, Callum Decker, Truman Rowell, Nathan Dumler, Iris Weant, Anistyn Williams, Lexy Smith

### Highlights

- Consistent student engagement and growing sense of community within the youth group
- Meaningful times of worship, prayer, and response during weekly gatherings
- Students consistently invite their friends to gatherings and church services
- Fundraisers held throughout the year to help raise funds for their personal accounts to go to camp and NYC

## Highlights Continued

- Participation in district NYI events such as camps, NYC, and Breakaway
- Students beginning to discover and use their gifts in leadership and service through the NYI Council
- Strengthened partnerships with families and increased communication with parents
- Studied the book of Revelation and Ephesians
- Intentional teaching of Nazarene doctrine to help students better understand their faith and church membership
- 
- **Goals for 2026-2027**
- Continue aligning our ministry with the mission of NYI: to reach, teach, and empower young people
- Deepen students' understanding of Scripture and encourage a life of holiness
- Strengthen small group discipleship and accountability relationships
- Expand outreach efforts to connect with unchurched youth in our community
- Increase student leadership development through the NYI Council
- Encourage greater participation in district NYI events and service opportunities
- Equip students to live out their faith confidently in their schools, homes, and communities



# TERRY CORZINE

## BOARD CHAIR OF THE TRUSTEES

SINCE JUNE 2022

14

It is my privilege to report that the Board of Trustees faithfully, and successfully, carried out their responsibilities in setting the financial strategy and plan, and the maintaining of our facilities for use in the building of God's Kingdom. The team prioritized repairs, balancing finite financial resources in order to keep the buildings and equipment functioning. I would like to share some highlights.

### **Significant Repairs**

This was not a "quiet" year for large repairs. We are grateful for volunteers who participated in the routine and non-routine maintenance required. Also, we must thank those who have donated funds to cover the costs of these repairs. Some of the larger items are listed here:

- Water heater serving the kitchen was replaced
- Shower plumbing repaired in the Cody house
- Garbage disposal replaced in the Cody house
- Sump pump replaced in the Cody house • Sanctuary HVAC replacement
- Various other HVAC repairs for Office area, ATPS, SNA, HMC and Main Foyer
- Sprinkler system-major repair due to frozen and burst pipes

### **Kitchen Upgrade Project**

To better meet the increasing use of the kitchen, a crew of volunteers spent time, energy and expertise to improve function and appearance. Upgrades and improvements include:

- New cabinets and countertops and tile backsplash
- New sinks, fixtures and garbage disposals
- New flooring
- Ceiling tiles replaced
- Walls painted
- New commercial dishwasher
- Many new electrical outlets

Many hours of volunteer effort was invested. It was a pleasure to see all those who came together for this. Funding for materials was completely underwritten by donations. The utility of the kitchen has increased dramatically. Thanks to all!

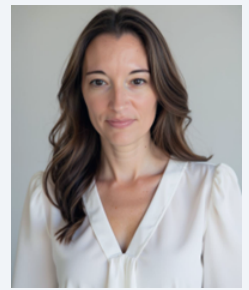
### **Financial Notes**

The board of Trustees is mindful of the sacrificial giving by our church family. Each year a balanced budget is proposed to the full church board for approval, on time, and ahead of the beginning of the fiscal year. The team has been sensitive and thoughtful, and successful, in prioritizing how funds are spent on the facility care. Also, the plan to retire the mortgage balance in 2033 remains on track to avoid another refinancing of that debt.

I am honored to have served with this team of Trustees for this fiscal year.

# ALISHA ROBERTS

CHURCH TREASURER  
SINCE JUNE 2024



## A Year of Faithfulness, Progress, and Adjustments

We give God thanks for another year of faithful ministry and resources. This year has been marked by meaningful ministry, sacrificial generosity, and complexity at times. Through each season we have faithfully navigated our resources to cover our financial responsibilities as well as bless the community locally and globally. Thank you for partnering with us through your giving.

### Debt Reduction Campaign- Mortgage Pay-Off

One of the significant moments this year came from our debt reduction efforts through the Bold Vision Bold Faith Campaign. As a congregation, we set a goal to contribute \$300,000 toward the principal of our mortgage over a three-year period. Through your generosity and commitment, we reached that goal a full year early in 2026. That kind of response speaks volumes. It reflects a church that believes in its mission, that is willing to sacrifice, and that understands the importance of long-term stewardship. This milestone is something we should all pause to celebrate.

Mortgage Balance at time of refinance in Nov 2022: \$1.5 Million

Mortgage Balance as of 2/2026: \$931,291.85

### Mission Beyond our Walls

Each year we intentionally set aside a portion of our budget (\$50,000 this fiscal year) to support our district and denominational partnerships. These funds are distributed across a variety of efforts, including church planting, support of our district office, pastoral pensions and benefits, MidAmerica Nazarene University, and the World Evangelism Fund. This giving allows us to participate in something larger than ourselves and helps strengthen churches, equip leaders, and extend the message of hope both locally and around the world. We remain committed to this outward focus, recognizing that generosity is not just something we practice in abundance, but a value we carry in every season of our church life.

Funds given to the Denominational partnerships, World Evangelism Fund, Faith Promise, Alabaster, NTS and the Maui Missions Trip: \$93,577.

### Facility Repairs

This year brought an unusual and significant number of facility repairs, many of which were both unexpected and essential. From the replacement of the air conditioning system in the main sanctuary, to upgrades to the electrical control panel, plumbing issues at the Cody House,

and necessary repairs to our fire sprinkler system, each situation required immediate attention. At times, these needs came in the midst of an already challenging financial season and understandably gave us pause. And yet, through the continued faithfulness of this congregation, and careful use of reserves, we were able to respond to each need, complete the repairs, and meet our obligations without interruption to ministry. We are deeply grateful for that provision.

At the same time, these experiences serve as an important reminder that our facility, while a tremendous asset for ministry, requires ongoing care and investment. Maintaining these spaces well is part of how we steward what has been entrusted to us and ensure that our church remains a place that is safe, welcoming, and ready for the work ahead.

If you have skills or resources that you would like to contribute to our ongoing maintenance needs please contact a member of the church board to see how you can partner with us in these endeavors.

### Financial Challenges

Over the course of the year, we began to see a growing gap between what it takes to cover our fixed costs each month and the giving that is being received. On average, our monthly budget need is around \$45,000, while in several stretches of the year, giving has been closer to \$36,000 per month. That difference creates pressure that must be addressed and we have made several intentional decisions to help navigate the year responsibly.

Each month we have diligently monitored our income and expenses and deferred spending where possible.

Earlier in our planning, we had envisioned a two-part strategy for accelerating our mortgage payoff. The first was the congregational goal we have now achieved. The second involved making additional principal payments through the operating budget. Given the financial pressures we've experienced, we made the decision to pause the additional payments for now and redirect those funds toward sustaining our day-to-day operations. In a similar way, certain funds from the schools that had been contributing toward debt reduction have also been temporarily reallocated to support current operating needs. Our goal is to get back on track and resume these payments for the extra principal payments as soon as possible to stay on target for our debt reduction campaign. (Please note all funds given by the congregation to Bold Vision Bold Faith go directly to the principal payment each month)

## Looking Forward

As we look ahead, we are paying close attention to a few key areas. The gap between giving and expenses is something we are actively working to address. We are also mindful of how much unrestricted funding is available to support ongoing ministry, and we are evaluating how our staffing and structure align with our current reality. These are normal and necessary parts of responsible leadership, and we approach them with both care and confidence.

We believe the strength of our church is found in the body of a people who are committed to the mission, who care for one another, and who are willing to invest in what God is doing. Thank you for your faithfulness. Thank you for your trust. And thank you for continuing to be part of God's amazing story through the life of Shawnee Nazarene Church.

## Budget Expense By Categories (June-February)

Expenses	Percent of Budget	Actual Year to Date
<b>Missions/Ministry-</b> (Global and Local)	12%	\$52,818
<b>Personnel</b> - (Pastors, Office, Custodial)	42%	\$180,230
<b>Property and Maintenance-</b> (Mortgage, Utilities, Repairs, etc)	38%	\$162,270
<b>Admin/Other-</b> (Accounting Services, Office Expenses, Bank Fees, etc)	8%	\$35,783
<b>Total</b>	100%	\$431,101

\*The above numbers reflect budget expenses only and do not include designated giving.

**Shawnee Church of the Nazarene**  
**Statement of Financial Position**  
February 28

	2026	2025
<b>Assets</b>		
<b>Current Assets</b>		
1050 ACCU Savings	\$ 50.02	\$ 50.02
1070 ACCU General Checking	252,236.64	245,611.27
1080 ACCU Money Market	2,573.02	2,552.52
1090 ACCU Term Sharing Certificate	1,103.73	1,074.14
1095 Venmo	30.00	-
1120 Prepaid Payroll	-	-
1130 Receivable	-	-
<b>Total Current Assets</b>	<b>255,993.41</b>	<b>249,287.95</b>
<b>Fixed Assets</b>		
1205 Plano	12,379.00	12,379.00
1210 5539 Quivira Rd 2006 Add	3,392,129.51	3,392,129.51
1220 5539 Quivira Road	827,480.00	827,480.00
1230 5533 Quivira Road	45,000.00	45,000.00
1240 5548 Cody	100,329.86	100,329.86
1250 5548 Cody 2006 Additions	100,514.56	100,514.56
1260 5544 Cody	82,398.90	82,398.90
<b>Total Fixed Assets</b>	<b>4,560,231.83</b>	<b>4,560,231.83</b>
<b>Total Assets</b>	<b>\$ 4,816,225.24</b>	<b>\$ 4,809,519.78</b>
<b>Liabilities &amp; Net Assets</b>		
<b>Current Liabilities</b>		
2005 Accounts Payable	\$ 1.75	\$ -
2010 Federal Tax Payable	2,529.74	2,397.34
2020 State Tax Payable	455.00	778.00
2030 Payroll Liabilities	(458.10)	(100.00)
<b>Total Current Liabilities</b>	<b>2,528.39</b>	<b>3,075.34</b>
<b>Long Term Liabilities</b>		
2140 Mortgage Payable - ACCU - 10 year	931,291.85	1,055,557.00
<b>Total Long Term Liabilities</b>	<b>931,291.85</b>	<b>1,055,557.00</b>
<b>Total Liabilities</b>	<b>933,820.24</b>	<b>1,058,632.34</b>
<b>Net Assets</b>		
<b>With Donor Restrictions</b>	<b>243,607.43</b>	<b>218,156.03</b>
<b>Without Donor Restrictions</b>		
Net Investment in Fixed Assets	3,628,939.98	3,504,674.83
Board Designated	57,265.83	65,877.08
Prior Years' Net Balance	(133,232.43)	(150,542.90)
Current Year Net Balance	85,824.19	112,722.40
<b>Total Without Donor Restrictions</b>	<b>3,638,797.57</b>	<b>3,532,731.41</b>
<b>Total Net Assets</b>	<b>3,882,405.00</b>	<b>3,750,887.44</b>
<b>Total Liabilities &amp; Net Assets</b>	<b>\$ 4,816,225.24</b>	<b>\$ 4,809,519.78</b>

**Shawnee Church of the Nazarene**  
**Church Operating Revenue & Expense Comparison**  
 For the Period Ending February 28, 2026

	Weeks		Revenues		Expenses	
	2024-2025	2025-2026	2024-2025	2025-2026	2024-2025	2025-2026
June	5	5	\$ 41,808	\$ 32,267	\$ 33,653	\$ 45,330
July	4	4	48,012	50,099	39,974	47,811
August	4	5	48,538	36,236	46,280	54,727
September	5	4	42,794	31,934	40,933	48,543
October	4	4	41,232	51,956	47,894	49,189
November	4	5	47,661	53,215	47,001	38,084
December	5	4	61,982	90,357	45,562	52,417
January	4	4	38,882	35,554	55,073	51,818
February	4	4	34,110	36,646	45,471	43,182
March	5	5	37,589		37,585	
April	4	4	35,494		46,481	
May	4	5	37,226		44,564	
<b>YTD Totals</b>	<b>39</b>	<b>39</b>	<b>405,019</b>	<b>\$ 418,263</b>	<b>401,840</b>	<b>\$ 431,101</b>
<b>Totals</b>	<b>52</b>	<b>53</b>	<b>\$ 515,328</b>	<b>\$ 418,263</b>	<b>\$ 530,471</b>	<b>\$ 431,101</b>

Weekly Average

\$ 10,385	\$ 10,725	\$ 10,304	\$ 11,054
-----------	-----------	-----------	-----------

