

# PLANTED

PUTTING DOWN ROOTS IN MIDTOWN





## LETTER FROM PASTOR PETE

TWENTY YEARS AGO, a group of college students led by a fresh-out-of-seminary church planter and his young family had a vision for a new kind of church in Bend. In 2006, Antioch was born and held its first worship service in Father Luke’s Room at McMenamins. Since then, we have rented Sunday space at the Regal Theater, Summit High School, and Bend Senior High. For many years, we celebrated being a “tabernacle church” like the Israelites who set up and tore down their portable sanctuary as they wandered through the wilderness. Not being tied down to a building helped remind us that church isn’t a place we go, it’s who we are.

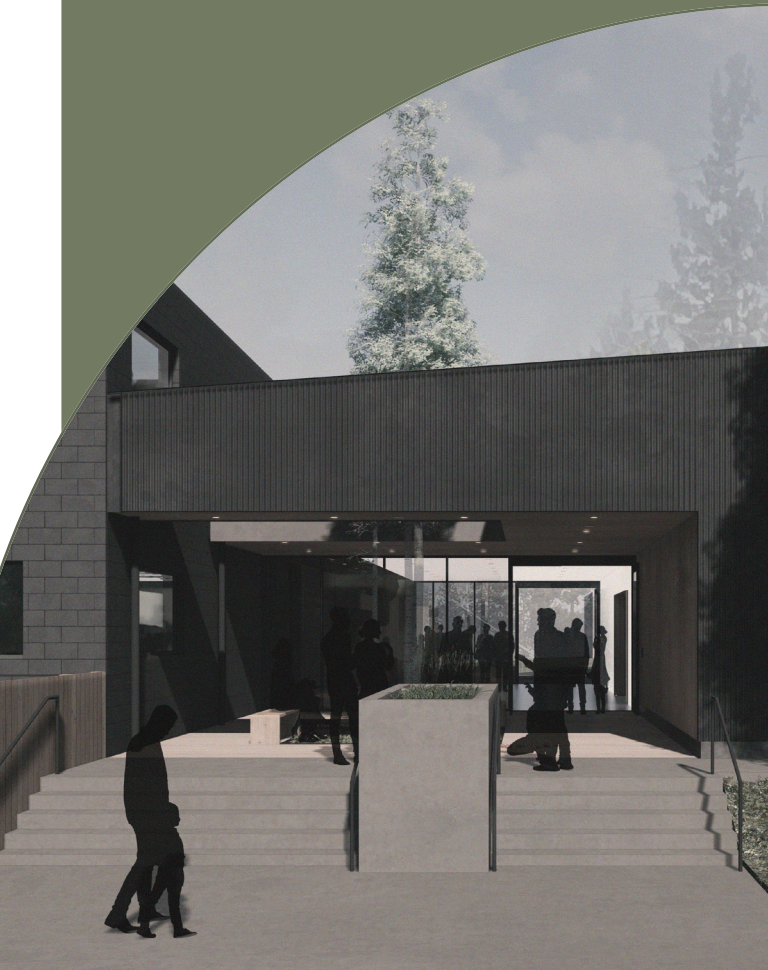
We now find ourselves in a new season. While we continue to strongly affirm that the church is people, not a place, we have also sensed the Lord inviting us to put down roots and establish a long-term presence in the center of our city. After leading the Israelites out of the desert and into the promised land, God soon instructed his people to replace the tabernacle with a permanent temple where they could gather to worship for generations to come.

When we bought our property at 6th and Clay in 2020, we saw it as our “starter home,” but over the past few years, we have sensed God leading us to make it our “forever home.” As we’ve said since the beginning of this journey, whatever we’re going to do, we’re going to do it together. I can’t tell you how thankful I am for this congregation. I am truly blown away by your patience, trust, and generosity. I hope you’ll join us as we put down our roots in Midtown and seek to leave this place better than we found it.

Yours in Christ,

PETE

# THE VISION



MAIN ENTRANCE FROM CLAY AVE.

## WORSHIP

We see a SACRED SPACE where Christ is proclaimed for generations to come, and his grace is received through water and Word, bread and wine. A place where the image of our Creator is celebrated through creative beauty, artistic excellence, and awe-inspiring architecture.

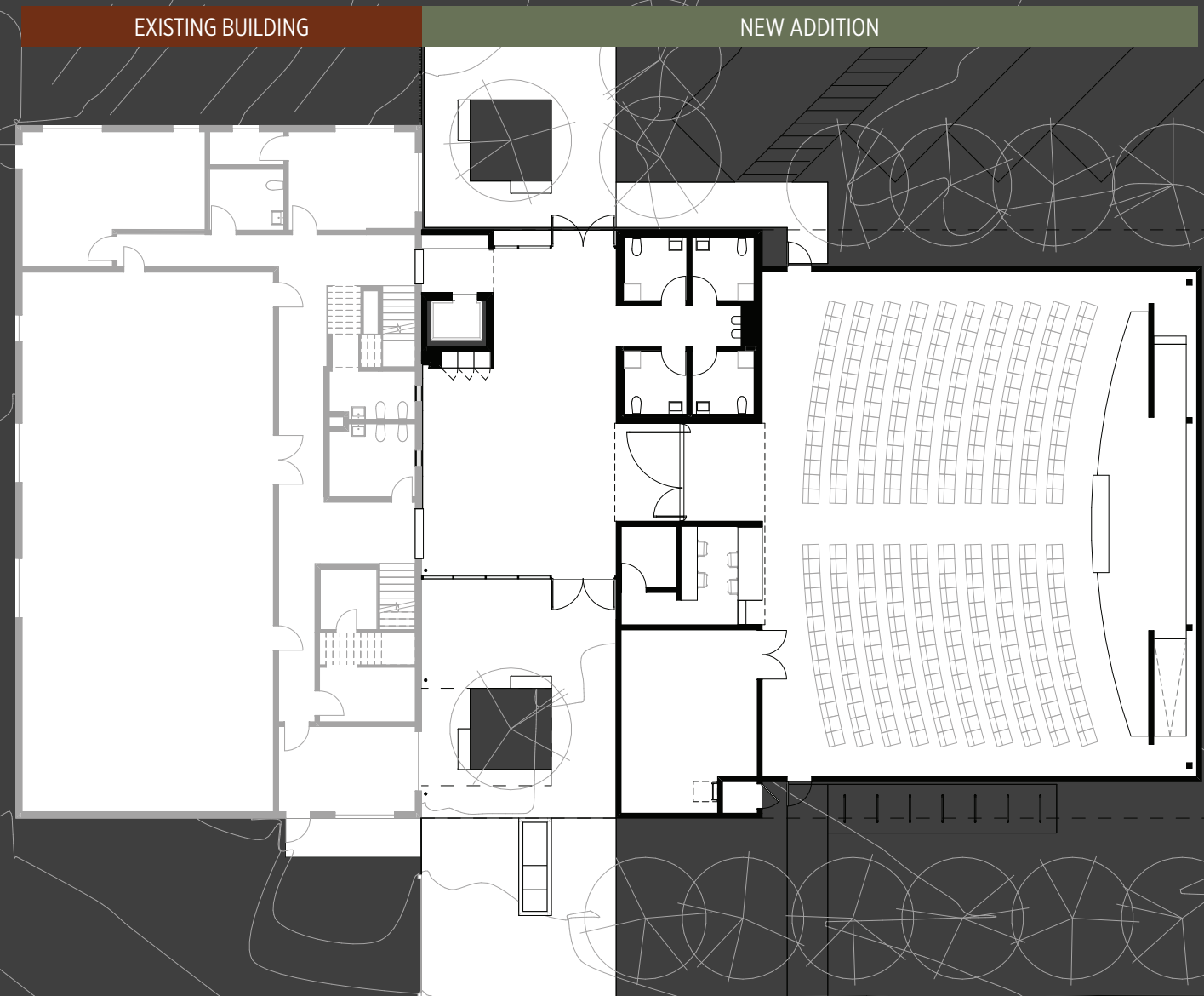
## JUSTICE

We see a PLACE OF PEACE for our neighborhood, deeply embedded in our local community, seeking to be a hub of blessing to our city, especially those in need. An outpost where ambassadors for the kingdom are commissioned to serve the world in Jesus' name.

## COMMUNITY

We see a WELCOMING HOME where kids, youth, and adults can discover their place in a vibrant and eclectic expression of the family of God. A community seeking the flourishing for all of creation, where plants and animals, earth and environment are cultivated and cared for.

# THE RECONCILIATION OF ALL THINGS





MAIN ENTRANCE FROM CLAY AVE.

# THE PLAN

*5,700-sf single-story addition  
in our existing parking lot*

## KIDS & YOUTH

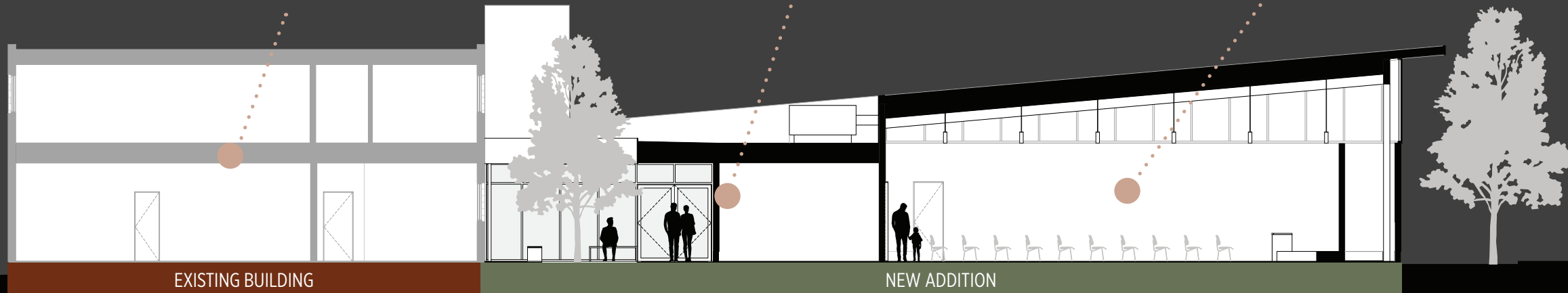
Our existing 8,400 sf building will continue to house offices and classrooms, as well as an upgraded and remodeled kitchen. Our current sanctuary will become a gathering space for kids and youth. We will also be able to serve families in our city by providing daycare in our downstairs classrooms throughout the week.

## ENTRANCE & LOBBY

A new lobby with restrooms, a coffee area, and drinking fountains will welcome people into our space and connect the new sanctuary to our existing building. It will also include an elevator that will make our entire campus fully ADA accessible.

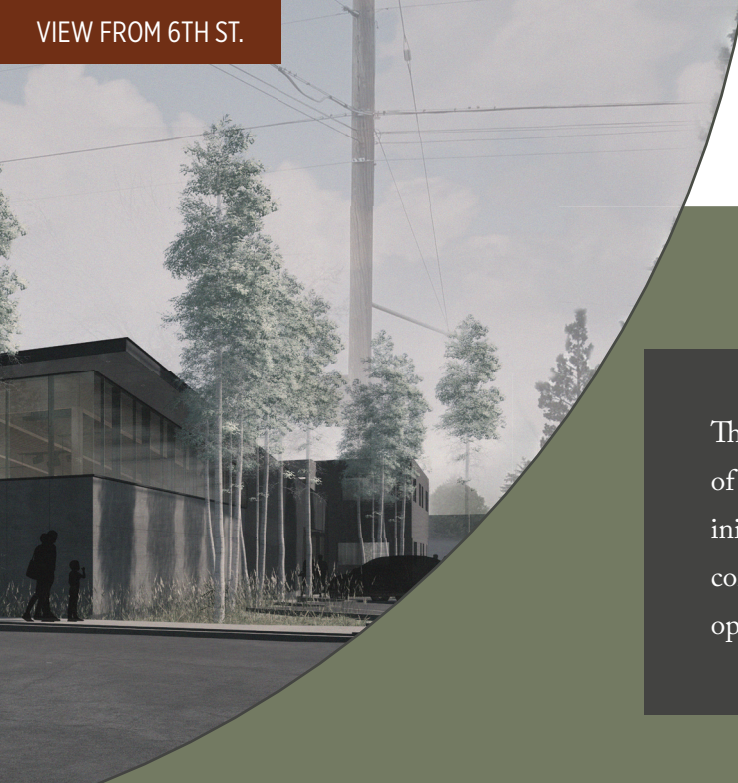
## SANCTUARY

The primary space in the new addition will be a day-lit, glass-filled, 300-seat sanctuary. It will be a simple but sacred space devoted to worship, but also available for performing arts and other community events.



EXISTING BUILDING

NEW ADDITION



# THE NEED

## \$3.8 MILLION

This project will be funded by the sacrificial generosity of our congregation. Our dream is to raise enough in initial offerings and long-term pledges that we are able to complete construction without going into debt. We are open to exploring additional financing options if necessary.

### WAYS TO GIVE

We are inviting our whole church family to prayerfully discern what God might enable you to give toward our building project in addition to your regular giving.

#### PLEASE CONSIDER...

1. Giving a one-time gift.
2. Giving monthly for the next three years.



ONLINE  
[antiochchurch.org/give](https://antiochchurch.org/give)



MAIL  
PO Box 421, Bend, OR 97709



IN THE BOX  
Bring on Sunday Mornings



OTHER WAYS  
Stocks, IRA, other

# F A Q

#### Why do we need to do a building project?

Our current building is no longer big enough to serve the kids and adults of our growing congregation. This project will also allow us to better serve our local ministry partners and continue to share our space throughout the week.

#### Have we considered buying another existing church building?

Yes. We have looked at many other church buildings and properties, but throughout the process, we have felt a clear calling to make 6th and Clay our forever home.

#### What about parking?

We have a formal, longstanding agreement with Bend Senior High to use their parking lot on Sundays, which will continue throughout and beyond the school's construction project.

#### Will the new building change what kind of church we are?

Our new space may feel a little different, but our vision and mission will stay the same. We believe this new addition will help us be more effective as we seek to join God in the reconciliation of all things and meet the needs of our community and city.

#### Couldn't the money we're spending on the building be used to help people in need?

We believe that the money invested in this project will ultimately expand our capacity for compassion and justice partnerships and initiatives in Bend and around the world.

#### Should I give to this project instead of my regular tithes and offerings?

We are asking our community to continue their regular giving and make any contributions to Planted on top of what you already give.

#### Can I give non-cash gifts?

Yes. In fact, appreciated investments held more than one year, such as publicly traded stocks, mutual fund shares, and bonds, may provide significant tax advantages to the donor. For those aged 72 and over, contributions may also be made through charitable IRA rollovers from traditional or Roth IRAs. Contact Pastor Kip for more information.

# MILESTONES

*If fundraising goals are met,  
the estimated timeline will be...*

SPRING 2020

SUMMER 2023

SUMMER 2024

SPRING 2025

SPRING 2026

SUMMER 2021

FALL 2023

FALL 2024

FALL 2025

SPRING 2027

After extensive interior renovations, we begin holding Sunday services at 6th and Clay. Attendance begins to steadily increase and stabilize.

We begin exploring possibilities for development and expansion of the property. After presenting several options to the congregation, we decide to pursue a more efficient and feasible path.

Debartolo Architects begins schematic design and design development.

City permitting and final budgeting are complete.

Project complete.

Construction begins.

Antioch purchases the old Grace Baptist building on the corner of 6th and Clay during the COVID-19 pandemic.

The vision for expanding our facilities is born as Antioch's leadership discern God leading us to make 6th and Clay our church's "forever home."

We hire DeBartolo Architects, who develop a beautiful, functional design concept. A budget estimate and pre-approval from the city of Bend are completed before presenting to the congregation.

The project is presented to the congregation, and the Planted campaign officially launches on June 1 as congregants turn in their commitment cards!



REAR ENTRANCE FROM THE ALLEY

# PRAYER OF GENEROSITY

Lord, teach us to be generous,  
and to faithfully steward all you've given us.  
Let us give, not out of guilt, but with gratitude and joy.  
Let us give to bless the church, your beloved community.  
Let us give to provide food for the hungry,  
hope for the hurting, shelter for the stranger,  
justice for the poor, and salvation for the lost.  
Lord, teach us to be generous,  
for the glory of your name.  
Amen.

